



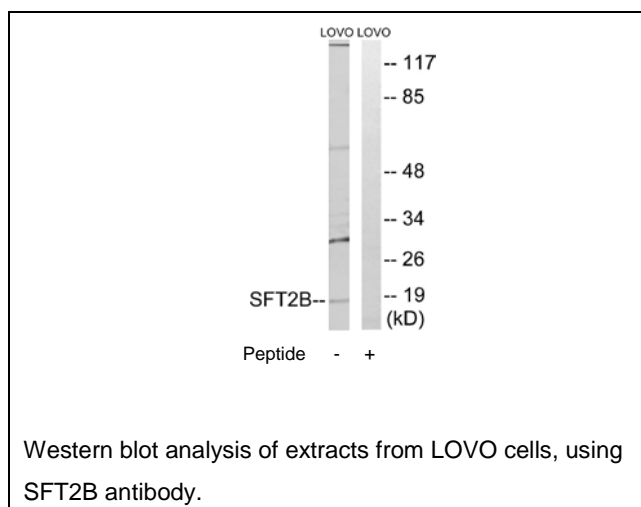
## SFT2B Antibody

**E11-19499C****Catalog Number:** E11-19499C**Concentration:** 1mg/ml**Swiss-Prot No.:** O95562**Other Names:** dj747l4.c1.2; flj34085; rp4-747l4.1; sft2 domain containing 2; sft2b; sft2d2; unq512**Storage/Stability:** Store at -20 °C/1 year**Form of Antibody:** Rabbit IgG in phosphate buffered saline (without  $Mg^{2+}$  and  $Ca^{2+}$ ), pH 7.4, 150mM NaCl, 0.02% sodium azide and 50% glycerol.**Immunogen:** The antiserum was produced against synthesized peptide derived from internal of human SFT2B.**Purification:** The antibody was affinity-purified from rabbit antiserum by affinity-chromatography using epitope-specific immunogen.**Specificity:** SFT2B antibody detects endogenous levels of total SFT2B protein.**Reactivity:** Human (Identities = 100%, Positives = 100%);  
Mouse (Identities = 100%, Positives = 100%);  
Rat (Identities = 100%, Positives = 100%)**Applications:** WB: 1:500~1:1000 ELISA: 1:40000**References:**

Rhodes S., Submitted (JAN-1999) to the EMBL/GenBank/DDBJ databases.

Gregory S.G., Nature 441:315-321(2006).

The MGC Project Team, Genome Res. 14:2121-2127(2004).

**For Research Use Only**