



## NSF Antibody

E11-19508C

**Catalog Number:** E11-19508C

**Concentration:** 1mg/ml

**Swiss-Prot No.:** P46459

**Other Names:** Vesicle-fusing

ATPase, EC=3.6.4.6, N-ethylmaleimide-sensitive fusion protein, Short name=NEM-sensitive fusion protein, Vesicular-fusion protein NSF

**Storage/Stability:** Store at -20 °C/1 year

**Form of Antibody:** Rabbit IgG in phosphate buffered saline (without Mg<sup>2+</sup> and Ca<sup>2+</sup>), pH 7.4, 150mM NaCl, 0.02% sodium azide and 50% glycerol.

**Immunogen:** The antiserum was produced against synthesized peptide derived from internal of human NSF.

**Purification:** The antibody was affinity-purified from rabbit antiserum by affinity-chromatography using epitope-specific immunogen.

**Specificity:** NSF antibody detects endogenous levels of total NSF protein.

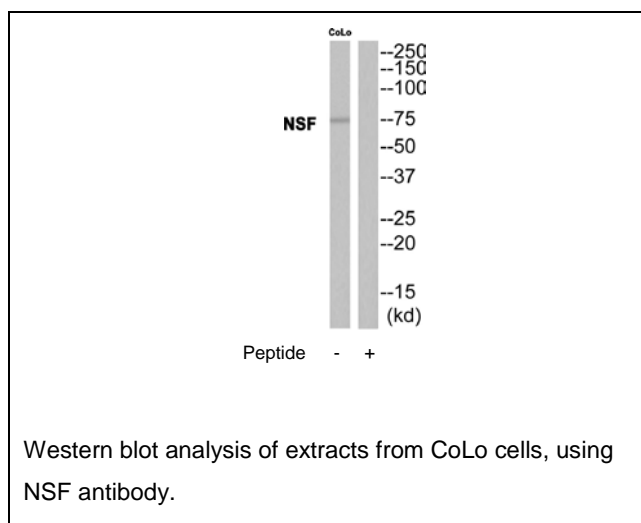
**Reactivity:** Human, Mouse, Rat

**Applications:** WB: 1:500~1:1000 ELISA: 1:40000

**References:**

Ota T., Nat. Genet. 36:40-45(2004) [PubMed: 14702039].

Zody M.C., Nature 440:1045-1049(2006) [PubMed: 16625196] [Abstract].



**For Research Use Only**