



## KCNAB3 Antibody

**E11-19548C****Catalog Number:** E11-19548C**Concentration:** 1mg/ml**Swiss-Prot No.:** O43448**Other Names:** Voltage-gated potassium channel subunit beta-3; K(+) channel subunit beta-3; Kv-beta-3; KCNAB3; KCNA3B**Storage/Stability:** Store at -20 °C/1 year**Form of Antibody:** Rabbit IgG in phosphate buffered saline (without Mg<sup>2+</sup> and Ca<sup>2+</sup>), pH 7.4, 150mM NaCl, 0.02% sodium azide and 50% glycerol.**Immunogen:** The antiserum was produced against synthesized peptide derived from C-terminal of human KCNAB3.**Purification:** The antibody was affinity-purified from

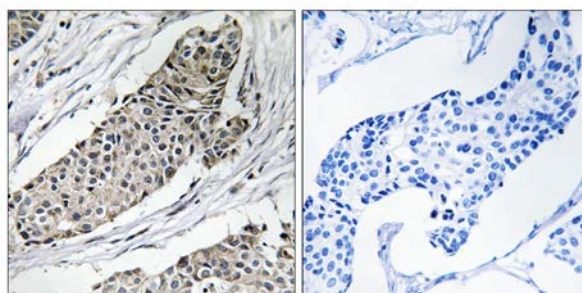
rabbit antiserum by affinity-chromatography using epitope-specific immunogen.

**Specificity:** KCNAB3 antibody detects endogenous levels of total KCNAB3 protein.**Reactivity:** Human (Identities = 100%, Positives = 100%);  
Mouse (Identities = 93%, Positives = 100%);  
Rat (Identities = 93%, Positives = 100%)**Applications:** IHC: 1:50~1:100 ELISA: 1:10000**References:**

Leicher T., J. Biol. Chem. 273:35095-35101(1998).

The MGC Project Team; Genome Res. 14:2121-2127(2004).

Olsen J.V., Cell 127:635-648(2006).



Peptide

-

+

Immunohistochemistry analysis of paraffin-embedded human breast carcinoma tissue using KCNAB3 antibody.

**For Research Use Only**