



## WASF2 Antibody

**E11-19560C****Catalog Number:** E11-19560C**Concentration:** 1mg/ml**Swiss-Prot No.:** Q9Y6W5**Other Names:** Wiskott-Aldrich syndrome protein family member 2/WASP family protein member 2; Protein WAVE-2; Verprolin homology domain-containing protein 2; WASF2**Storage/Stability:** Store at -20 °C/1 year**Form of Antibody:** Rabbit IgG in phosphate buffered saline (without  $Mg^{2+}$  and  $Ca^{2+}$ ), pH 7.4, 150mM NaCl, 0.02% sodium azide and 50% glycerol.**Immunogen:** The antiserum was produced against synthesized peptide derived from internal of human WASF2.**Purification:** The antibody was affinity-purified from

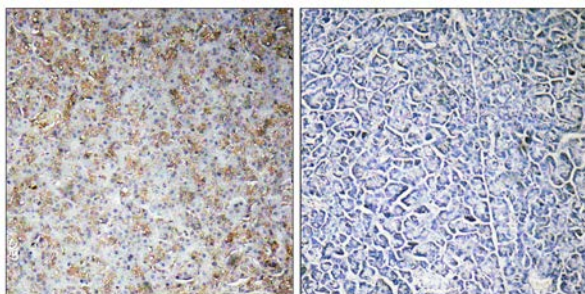
rabbit antiserum by affinity-chromatography using epitope-specific immunogen.

**Specificity:** WASF2 antibody detects endogenous levels of total WASF2 protein.**Reactivity:** Human (Identities = 100%, Positives = 100%);  
Mouse (Identities = 100%, Positives = 100%);  
Rat (Identities = 100%, Positives = 100%)**Applications:** WB: 1:500~1:1000 IHC: 1:50~1:100  
ELISA: 1:1000**References:**

Suetsugu S., Biochem. Biophys. Res. Commun. 260:296-302(1999).

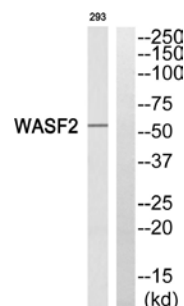
Gregory S.G., Nature 441:315-321(2006).

Miki H., Nature 408:732-735(2000).



Peptide - +

Immunohistochemistry analysis of paraffin-embedded human pancreas tissue, using WASF2 antibody.



Peptide - +

Western blot analysis of extracts from 293 cells, using WASF2 antibody.

**For Research Use Only**