



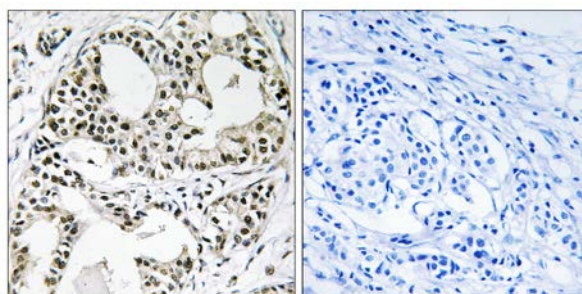
## YEATS2 Antibody

**E11-19565C****Catalog Number:** E11-19565C**Concentration:** 1mg/ml**Swiss-Prot No.:** Q9ULM3**Other Names:** YEATS domain-containing protein 2; YEATS2; KIAA1197**Storage/Stability:** Store at -20 °C/1 year**Form of Antibody:** Rabbit IgG in phosphate buffered saline (without  $Mg^{2+}$  and  $Ca^{2+}$ ), pH 7.4, 150mM NaCl, 0.02% sodium azide and 50% glycerol.**Immunogen:** The antiserum was produced against synthesized peptide derived from internal of human YEATS2.**Purification:** The antibody was affinity-purified from rabbit antiserum by affinity-chromatography using epitope-specific immunogen.**Specificity:** YEATS2 antibody detects endogenous levels of total YEATS2 protein.**Reactivity:** Human (Identities = 100%, Positives = 100%)**Applications:** IHC: 1:50~1:100 ELISA: 1:5000**References:**

Nagase T., DNA Res. 6:337-345(1999).

Ota T., Nat. Genet. 36:40-45(2004).

The MGC Project Team; Genome Res. 14:2121-2127(2004).



Peptide

-

+

Immunohistochemistry analysis of paraffin-embedded human breast carcinoma tissue using YEATS2 antibody.

**For Research Use Only**