



ZNF600 Antibody

E11-19604C

Catalog Number: E11- 19604C

Concentration: 1mg/ml, 100ug/100ul

Swiss-Prot No.: Q6ZNG1

Other Names: Zinc finger protein 600; ZNF600

Storage/Stability: Store at -20°C/1 year

Form of Antibody: Rabbit IgG in phosphate buffered saline (without Mg^{2+} and Ca^{2+}), pH 7.4, 150mM NaCl, 0.02% sodium azide and 50% glycerol.

Immunogen: The antiserum was produced against synthesized peptide derived from internal of human ZNF600.

Purification: The antibody was affinity-purified from rabbit antiserum by affinity-chromatography using epitope-specific immunogen.

Specificity: ZNF600 antibody detects endogenous levels of total ZNF600 protein.

Reactivity: Human (Identities = 100%, Positives = 100%)

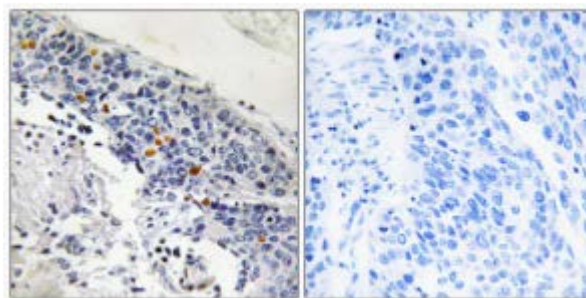
Applications: IHC: 1:50~1:100 ELISA: 1:10000

References:

Ota T., Nat. Genet. 36:40-45(2004).

The German cDNA consortium; Submitted (SEP-2004) to the EMBL/GenBank/DDBJ databases.

Matsuoka S., Science 316:1160-1166(2007).



Peptide - +

Immunohistochemistry analysis of paraffin-embedded
human lung carcinoma tissue using ZNF600 antibody.

For Research Use Only