



ZNF608 Antibody

E11-19605C**Catalog Number:** E11-19605C**Concentration:** 1mg/ml**Swiss-Prot No.:** Q9ULD9**Other Names:** Zinc finger protein 608; Renal carcinoma antigen NY-REN-36; ZNF608; KIAA1281**Storage/Stability:** Store at -20 °C/1 year**Form of Antibody:** Rabbit IgG in phosphate buffered saline (without Mg^{2+} and Ca^{2+}), pH 7.4, 150mM NaCl, 0.02% sodium azide and 50% glycerol.**Immunogen:** The antiserum was produced against synthesized peptide derived from internal of human ZNF608.**Purification:** The antibody was affinity-purified from rabbit antiserum by affinity-chromatography using

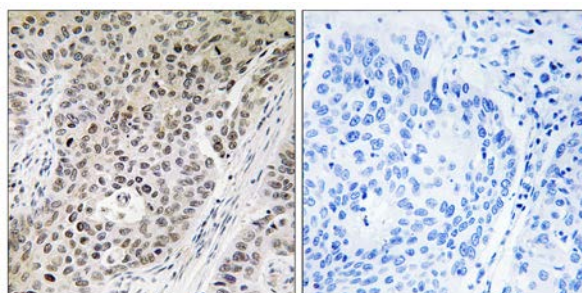
epitope-specific immunogen.

Specificity: ZNF608 antibody detects endogenous levels of total ZNF608 protein.**Reactivity:** Human (Identities = 100%, Positives = 100%);
Mouse (Identities = 93%, Positives = 93%)**Applications:** IHC: 1:50~1:100 ELISA: 1:5000**References:**

Nagase T., DNA Res. 6:337-345(1999).

Nakajima D., DNA Res. 9:99-106(2002).

The German cDNA consortium; Submitted (AUG-2004) to the EMBL/GenBank/DDBJ databases.



Peptide - +

Immunohistochemistry analysis of paraffin-embedded human lung carcinoma tissue using ZNF608 antibody.

For Research Use Only