



## SLC39A4 Antibody

**E11-19630C****Catalog Number:** E11-19630C**Concentration:** 1mg/ml**Swiss-Prot No.:** Q6P5W5**Other Names:** Zinc transporter ZIP4; Zrt- and Irt-like protein 4; ZIP-4; Solute carrier family 39 member 4; SLC39A4; ZIP4**Storage/Stability:** Store at -20 °C/1 year**Form of Antibody:** Rabbit IgG in phosphate buffered saline (without  $Mg^{2+}$  and  $Ca^{2+}$ ), pH 7.4, 150mM NaCl, 0.02% sodium azide and 50% glycerol.**Immunogen:** The antiserum was produced against synthesized peptide derived from internal of human

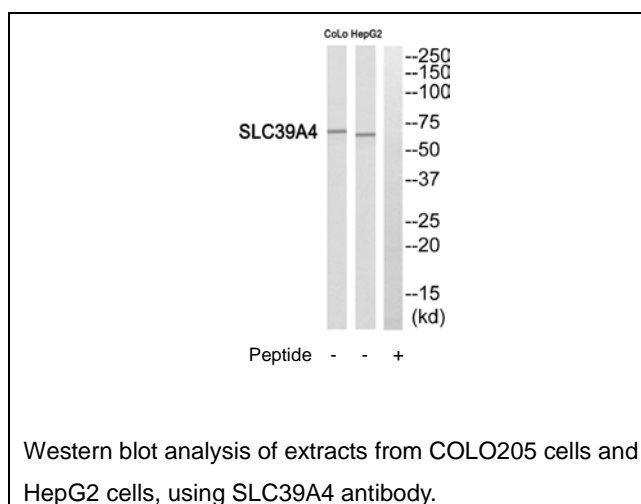
SLC39A4.

**Purification:** The antibody was affinity-purified from rabbit antiserum by affinity-chromatography using epitope-specific immunogen.**Specificity:** SLC39A4 antibody detects endogenous levels of total SLC39A4 protein.**Reactivity:** Human (Identities = 100%, Positives = 100%)**Applications:** WB: 1:500~1:1000 ELISA: 1:40000**References:**

Kuery S., Nat. Genet. 31:239-240(2002).

Ota T., Nat. Genet. 36:40-45(2004).

Nusbaum C., Nature 439:331-335(2006).

**For Research Use Only**