



CREB3L2 Antibody

E11-20601C**Catalog Number:** E11-20601C**Concentration:** 1mg/ml, 100ug/100ul**Swiss-Prot No.:** Q70SY1**Other Names:** cAMP-responsive element-binding protein 3-like protein 2; BBF2 human homolog on chromosome 7; Processed cAMP-responsive element-binding protein 3-like protein 2; CREB3L2; BBF2H7**Storage/Stability:** Store at -20°C/1 year**Form of Antibody:** Rabbit IgG in phosphate buffered saline (without Mg^{2+} and Ca^{2+}), pH 7.4, 150mM NaCl, 0.02% sodium azide and 50% glycerol.**Immunogen:** The antiserum was produced against synthesized peptide derived from internal of human CREB3L2.**Purification:** The antibody was affinity-purified from rabbit antiserum by affinity-chromatography using epitope-specific immunogen.**Specificity:** CREB3L2 antibody detects endogenous levels of total CREB3L2 protein.**Reactivity:** Human (Identities = 100%, Positives = 100%) ;

Mouse (Identities = 100%, Positives = 100%) ;

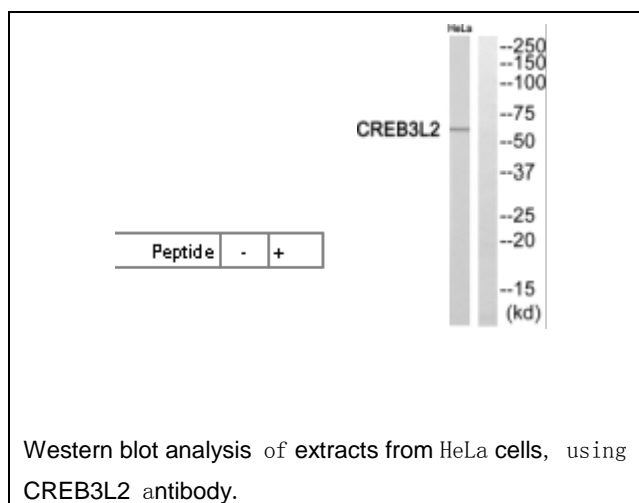
Rat (Identities = 100%, Positives = 100%)

Applications: WB: 1:500~1:1000 ELISA: 1:10000**References:**

Storlazzi C.T., Hum. Mol. Genet. 12:2349-2358(2003).

Ota T., Nat. Genet. 36:40-45(2004).

Scherer S.W., Science 300:767-772(2003).

**For Research Use Only**