



LIPB1 Antibody

E11-20615C**Catalog Number:** E11-20615C**Concentration:** 1mg/ml, 100ug/100ul**Swiss-Prot No.:** Q86W92**Other Names:** Liprin-beta-1; Protein tyrosine phosphatase receptor type f polypeptide-interacting protein-binding protein 1; PTPRF-interacting protein-binding protein 1; hSGT2; PPFIBP1; KIAA1230**Storage/Stability:** Store at -20°C/1 year**Form of Antibody:** Rabbit IgG in phosphate buffered saline (without Mg^{2+} and Ca^{2+}), pH 7.4, 150mM NaCl, 0.02% sodium azide and 50% glycerol.**Immunogen:** The antiserum was produced against synthesized peptide derived from internal of human LIPB1.**Purification:** The antibody was affinity-purified from rabbit antiserum by affinity-chromatography using epitope-specific immunogen.**Specificity:** LIPB1 antibody detects endogenous levels of total LIPB1 protein.**Reactivity:** Human (Identities = 100%, Positives = 100%) ;

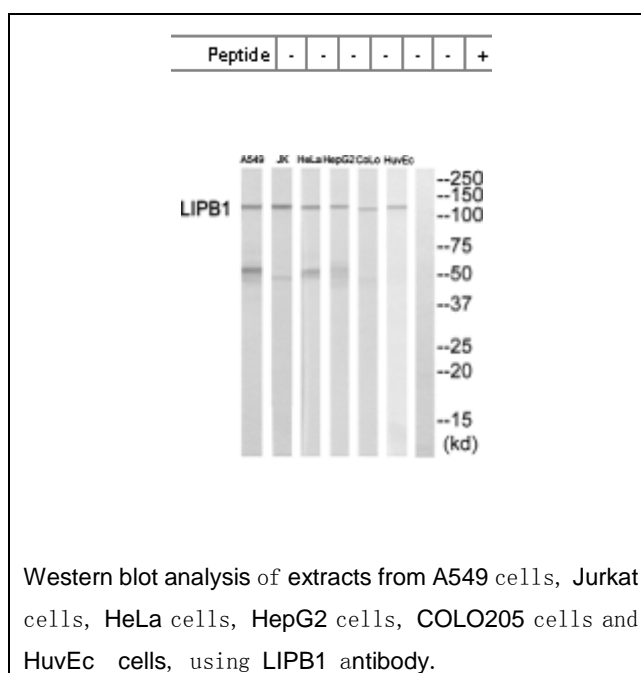
Mouse (Identities = 92%, Positives = 100%)

Applications: WB: 1:500~1:1000 ELISA: 1:20000**References:**

Serra-Pages C., J. Biol. Chem. 273:15611-15620(1998).

Nagase T., DNA Res. 6:337-345(1999).

Nakajima D., DNA Res. 9:99-106(2002).

**For Research Use Only**