



EME1 Antibody

E11-20653C**Catalog Number:** E11-20653C**Concentration:** 1mg/ml, 100ug/100ul**Swiss-Prot No.:** Q96AY2

Other Names: Crossover junction endonuclease EME1; EME1; essential meiotic endonuclease 1 homolog 1 (S. pombe); essential meiotic endonuclease 1 homolog 2; FLJ31364; hMMS4; homolog of yeast EME1 endonuclease; MMS4; MMS4 homolog; MMS4L

Storage/Stability: Store at -20°C/1 year

Form of Antibody: Rabbit IgG in phosphate buffered saline (without Mg^{2+} and Ca^{2+}), pH 7.4, 150mM NaCl, 0.02% sodium azide and 50% glycerol.

Immunogen: The antiserum was produced against synthesized peptide derived from internal of human EME1.

Purification: The antibody was affinity-purified from rabbit antiserum by affinity-chromatography using epitope-specific immunogen.

Specificity: EME1 antibody detects endogenous levels of total EME1 protein.

Reactivity: Human

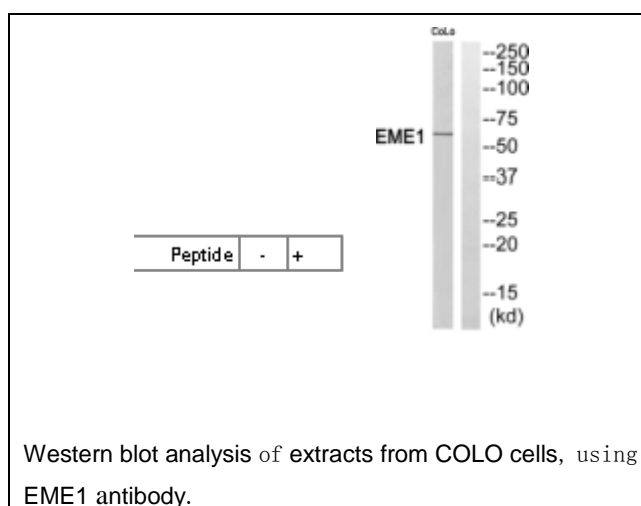
Applications: WB: 1:500~1:1000 ELISA: 1:1000

References:

Ota T., Nat. Genet. 36:40-45(2004) [PubMed: 14702039].

Zody M.C., Nature 440:1045-1049(2006) [PubMed: 16625196] [Abstract].

Oegruenc M., J. Biol. Chem. 278:21715-21720(2003) [PubMed: 12686547].

**For Research Use Only**