



FEV Antibody

E11-20672C**Catalog Number:** E11-20672C**Concentration:** 1mg/ml**Swiss-Prot No.:** Q99581**Other Names:** FEV; FEV (ETS oncogene family); FEV (fifth Ewing variant); Fifth Ewing variant protein; HSRNAFEV; PC12 ETS domain-containing transcription factor 1; PC12 ETS factor 1; Pet-1; PET1; Protein FEV**Storage/Stability:** Store at -20 °C/1 year**Form of Antibody:** Rabbit IgG in phosphate buffered saline (without Mg^{2+} and Ca^{2+}), pH 7.4, 150mM NaCl, 0.02% sodium azide and 50% glycerol.**Immunogen:** The antiserum was produced against synthesized peptide derived from N-terminal of human FEV.**Purification:** The antibody was affinity-purified from

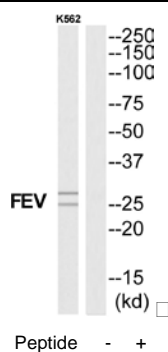
rabbit antiserum by affinity-chromatography using epitope-specific immunogen.

Specificity: FEV antibody detects endogenous levels of total FEV protein.**Reactivity:** Human**Applications:** WB: 1:500~1:3000 ELISA: 1:40000**References:**

Peter M., Oncogene 14:1159-1164(1997).

Hillier L.W., Nature 434:724-731(2005).

Maurer P., Oncogene 22:3319-3329(2003).



Western blot analysis of extracts from K562 cells, using FEV antibody.

For Research Use Only