



SPON2 Antibody

E11-20686C**Catalog Number:** E11-20686C**Concentration:** 1mg/ml, 100ug/100ul**Swiss-Prot No.:** Q9BUD6**Other Names:** Spondin-2, Mindin, Differentially expressed in cancerous and non-cancerous lung cells 1, DIL-1, SPON2, DIL1, UNQ435/PRO866**Storage/Stability:** Store at -20°C/1 year**Form of Antibody:** Rabbit IgG in phosphate buffered saline (without Mg^{2+} and Ca^{2+}), pH 7.4, 150mM NaCl, 0.02% sodium azide and 50% glycerol.**Immunogen:** The antiserum was produced against synthesized peptide derived from internal of human SPON2.**Purification:** The antibody was affinity-purified from rabbit antiserum by affinity-chromatography using epitope-specific immunogen.**Specificity:** SPON2 antibody detects endogenous levels of total SPON2 protein.**Reactivity:** Human (Identities = 100%, Positives = 100%)

Mouse (Identities = 100%, Positives = 100%)

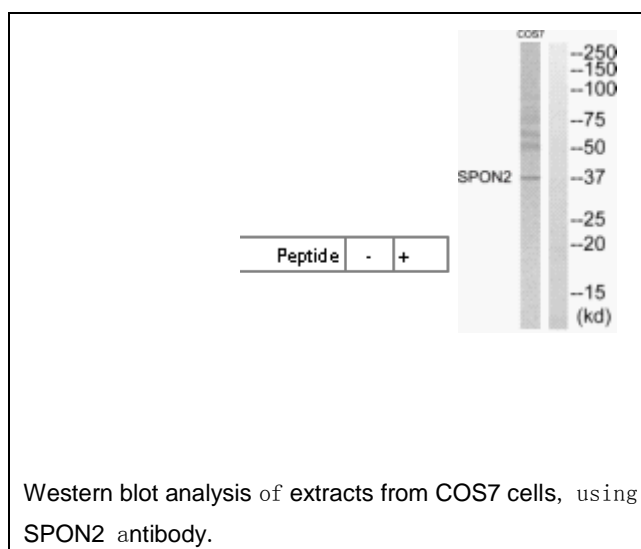
Rat (Identities = 100%, Positives = 100%)

Applications: WB: 1:500~1:1000 ELISA: 1:40000**References:**

Gray A.M., Genome Res. 13:2265-2270(2003).

Sugano S., Nat. Genet. 36:40-45(2004).

Wilson R.K., Nature 434:724-731(2005).

**For Research Use Only**