



## ZDHHC2 Antibody

**E11-20725C****Catalog Number:** E11-20725C**Concentration:** 1mg/ml, 100ug/100ul**Swiss-Prot No.:** Q9UIJ5

**Other Names:** Palmitoyltransferase ZDHHC2, Zinc finger DHHC domain-containing protein 2, DHHC-2, Zinc finger protein 372, Reduced expression associated with metastasis protein, Ream, Reduced expression in cancer protein, Rec, ZDHHC2, REAM, REC, ZNF372

**Storage/Stability:** Store at -20°C/1 year

**Form of Antibody:** Rabbit IgG in phosphate buffered saline (without  $Mg^{2+}$  and  $Ca^{2+}$ ), pH 7.4, 150mM NaCl, 0.02% sodium azide and 50% glycerol.

**Immunogen:** The antiserum was produced against synthesized peptide derived from internal of human ZDHHC2.

**Purification:** The antibody was affinity-purified from rabbit antiserum by affinity-chromatography using epitope-specific immunogen.

**Specificity:** ZDHHC2 antibody detects endogenous levels of total ZDHHC2 protein.

**Reactivity:** Human (Identities = 100%, Positives = 100%)

Mouse (Identities = 100%, Positives = 100%)

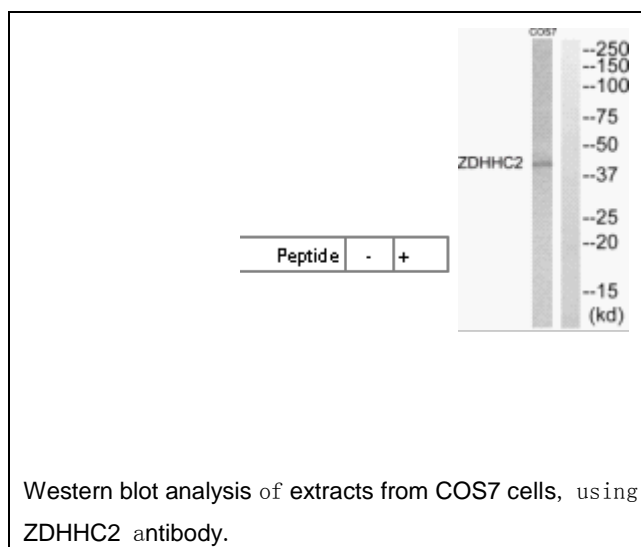
Rat (Identities = 100%, Positives = 100%)

**Applications:** WB: 1:500~1:1000 ELISA: 1:40000

**References:**

Nakamura Y., Genes Chromosomes Cancer 29:9-15(2000).

The MGC Project Team, Genome Res. 14:2121-2127(2004).



**For Research Use Only**