



CYC1 Antibody

E11-20760C**Catalog Number:** E11-20760C**Concentration:** 1mg/ml**Swiss-Prot No.:** P08574**Other Names:** CY1; cytochrome c-1; cytochrome c1 heme protein, mitochondrial**Storage/Stability:** Store at -20 °C/1 year**Form of Antibody:** Rabbit IgG in phosphate buffered saline (without Mg^{2+} and Ca^{2+}), pH 7.4, 150mM NaCl, 0.02% sodium azide and 50% glycerol.**Immunogen:** The antiserum was produced against synthesized peptide derived from internal of human CYC1.**Purification:** The antibody was affinity-purified from rabbit antiserum by affinity-chromatography using

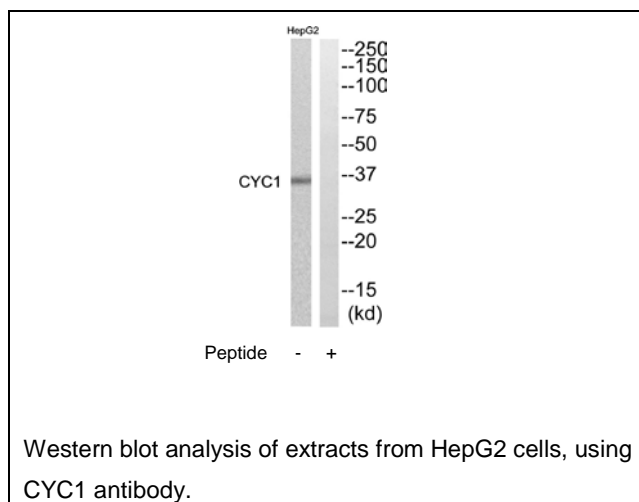
epitope-specific immunogen.

Specificity: CYC1 antibody detects endogenous levels of total CYC1 protein.**Reactivity:** Human (Identities = 100%, Positives = 100%)
Mouse (Identities = 93%, Positives = 100%)**Applications:** WB: 1:500~1:1000 ELISA: 1:20000**References:**

LaBaer J., Submitted (JUN-2004).

Bennett K.L., Submitted (OCT-2008).

Roetig A., Hum. Genet. 104:460-466(1999).

**For Research Use Only**