



MYL6 Antibody

E11-20889C**Catalog Number:** E11-20889C**Concentration:** 1mg/ml**Swiss-Prot No.:** P60660

Other Names: 17 kDa myosin light chain; ESMLC; LC17; LC17-GI; LC17-NM; LC17A; LC17B; MLC-3; MLC1SM; MLC3NM; MLC3SM; MYL6; Myosin light chain 3; Myosin light chain A3; Myosin light chain alkali 3; Myosin light polypeptide 6; myosin, light chain 6, alkali, smooth muscle and non-muscle; myosin, light polypeptide 6, alkali, smooth muscle and non-muscle; smooth muscle and non-muscle myosin alkali light chain; Smooth muscle and nonmuscle myosin light chain alkali 6

Storage/Stability: Store at -20 °C/1 year

Form of Antibody: Rabbit IgG in phosphate buffered saline (without Mg^{2+} and Ca^{2+}), pH 7.4, 150mM NaCl, 0.02% sodium azide and 50% glycerol.

Immunogen: The antiserum was produced against synthesized peptide derived from C-terminal of human MYL6.

Purification: The antibody was affinity-purified from rabbit antiserum by affinity-chromatography using epitope-specific immunogen.

Specificity: MYL6 antibody detects endogenous levels of total MYL6 protein.

Reactivity: Human; Mouse; Rat

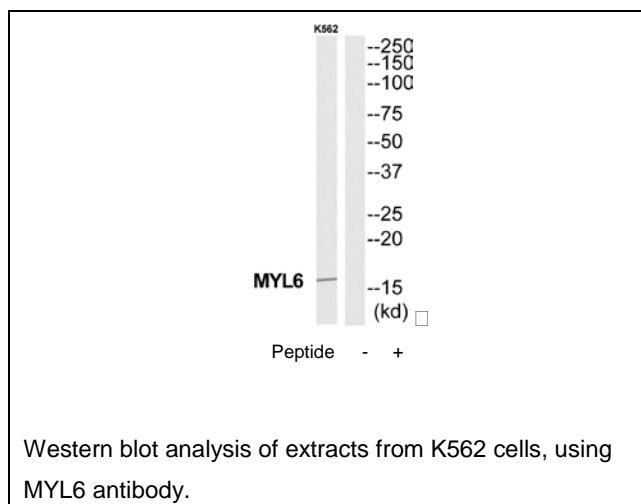
Applications: WB: 1:500~1:3000 ELISA: 1:1000

References:

Lenz S., J. Biol. Chem. 264:9009-9015(1989).

Hailstones D.L., Mol. Cell. Biol. 10:1095-1104(1990).

Bora P.S., Genomics 19:186-188(1994).



For Research Use Only