



MYLK Antibody

E11-20890C**Catalog Number:** E11-20890C**Concentration:** 1mg/ml, 100ug/100ul**Swiss-Prot No.:** Q15746**Other Names:** KMLS; KRP; MLCK; MYLK; myosin light chain kinase, smooth muscle and non-muscle isozymes; myosin light polypeptide kinase; telokin**Storage/Stability:** Store at -20°C/1 year**Form of Antibody:** Rabbit IgG in phosphate buffered saline (without Mg^{2+} and Ca^{2+}), pH 7.4, 150mM NaCl, 0.02% sodium azide and 50% glycerol.**Immunogen:** The antiserum was produced against synthesized peptide derived from internal of human MYLK.**Purification:** The antibody was affinity-purified from rabbit antiserum by affinity-chromatography using epitope-specific immunogen.**Specificity:** MYLK antibody detects endogenous levels of total MYLK protein.**Reactivity:** Human (Identities = 100%, Positives = 100%) ;

Mouse (Identities = 100%, Positives = 100%) ;

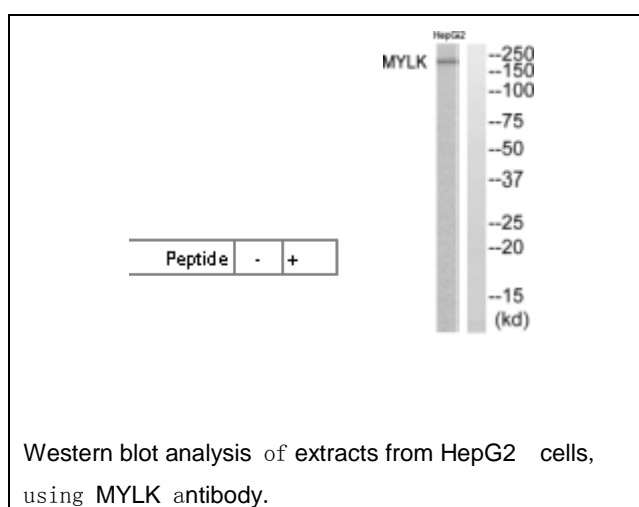
Rat (Identities = 100%, Positives = 100%)

Applications: WB: 1:500~1:1000 ELISA: 1:45000**References:**

Potier M.-C., Genomics 29:562-570(1995).

Garcia J.G.N., Am. J. Respir. Cell Mol. Biol. 16:489-494(1997).

Lazar V.L., Genomics 57:256-267(1999).

**For Research Use Only**