



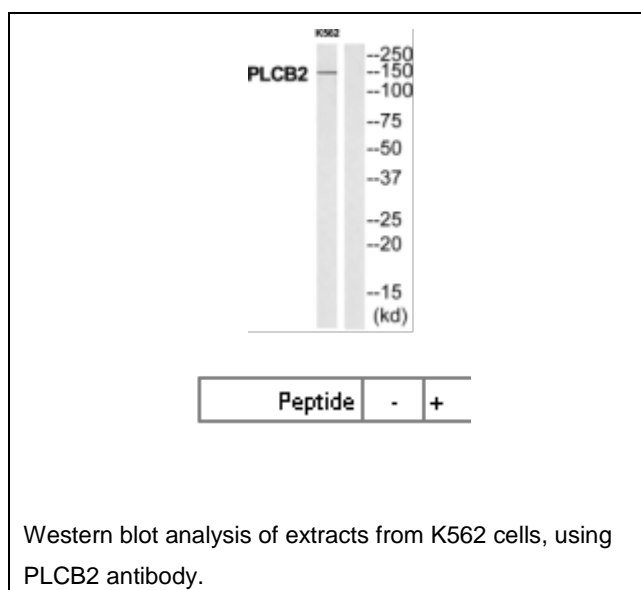
PLCB2 Antibody

E11-20897C**Catalog Number:** E11-20897C**Concentration:** 1mg/ml, 100ug/100uL**Swiss-Prot No.:** Q00722**Other Names:** 1-phosphatidylinositol-4,5-bisphosphate phosphodiesterase beta-2; FLJ38135; Phosphoinositide phospholipase C-beta-2; phospholipase C, beta 2; Phospholipase C-beta-2; PLC-beta-2; PLCB2**Storage/Stability:** Store at -20°C/1 year**Form of Antibody:** Rabbit IgG in phosphate buffered saline (without Mg²⁺ and Ca²⁺), pH 7.4, 150mM NaCl, 0.02% sodium azide and 50% glycerol.**Immunogen:** The antiserum was produced against synthesized peptide derived from C-terminal of human PLCB2.**Purification:** The antibody was affinity-purified from rabbit antiserum by affinity-chromatography using epitope-specific immunogen.**Specificity:** PLCB2 antibody detects endogenous levels of total PLCB2 protein.**Reactivity:** Human; Mouse; Rat**Applications:** WB: 1:500~1:1000 ELISA: 1:5000**References:**

Park D., J. Biol. Chem. 267:16048-16055(1992).

Ota T., Nat. Genet. 36:40-45(2004).

Zody M.C., Nature 440:671-675(2006).

**For Research Use Only**