



CHRM4 Antibody

E11-208G**Catalog Number:** E11-208G**Concentration:** 1mg/ml, 100ug/100uL**Swiss-Prot No.:** P08173**Other Names:** Muscarinic acetylcholine receptor M4; CHRM4**Storage/Stability:** Store at -20 °C/1 year**Form of Antibody:** Rabbit IgG in phosphate buffered saline (without Mg^{2+} and Ca^{2+}), pH 7.4, 150mM NaCl, 0.02% sodium azide and 50% glycerol.**Immunogen:** The antiserum was produced against synthesized peptide derived from internal of human CHRM4.**Purification:** The antibody was affinity-purified from

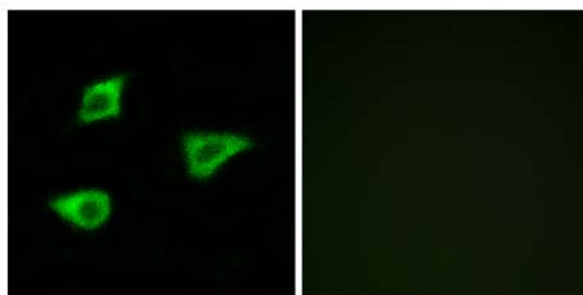
rabbit antiserum by affinity-chromatography using epitope-specific immunogen.

Specificity: CHRM4 antibody detects endogenous levels of total CHRM4 protein.**Reactivity:** Human (Identities = 100%, Positives = 100%);
Mouse (Identities = 100%, Positives = 100%);
Rat (Identities = 100%, Positives = 100%)**Applications:** IF: 1:100~1:500 ELISA: 1:10000**References:**

Bonner T.I., Science 237:527-532(1987).

Bonner T.I., Neuron 1:403-410(1988).

Peralta E.G., EMBO J. 6:3923-3929(1987).



Peptide

-

+

Immunofluorescence analysis of LOVO cells, using
CHRM4 antibody.**For Research Use Only**