



TUBA3C/E Antibody

E11-20908C**Catalog Number:** E11-20908C**Concentration:** 1mg/ml, 100ug/100ul**Swiss-Prot No.:** Q13748/Q6PEY2**Other Names:** Tubulin alpha-3C/D chain; Alpha-tubulin 2; Alpha-tubulin 3C/D; Tubulin alpha-2 chain; TUBA3C; TUBA2; TUBA3D**Storage/Stability:** Store at -20°C/1 year**Form of Antibody:** Rabbit IgG in phosphate buffered saline (without Mg^{2+} and Ca^{2+}), pH 7.4, 150mM NaCl, 0.02% sodium azide and 50% glycerol.**Immunogen:** The antiserum was produced against synthesized peptide derived from C-terminal of human TUBA3C/E.**Purification:** The antibody was affinity-purified from rabbit antiserum by affinity-chromatography using epitope-specific immunogen.**Specificity:** TUBA3C/E antibody detects endogenous levels of total TUBA3C/E protein.**Reactivity:** Human (Identities = 100%, Positives = 100%);

Mouse (Identities = 100%, Positives = 100%);

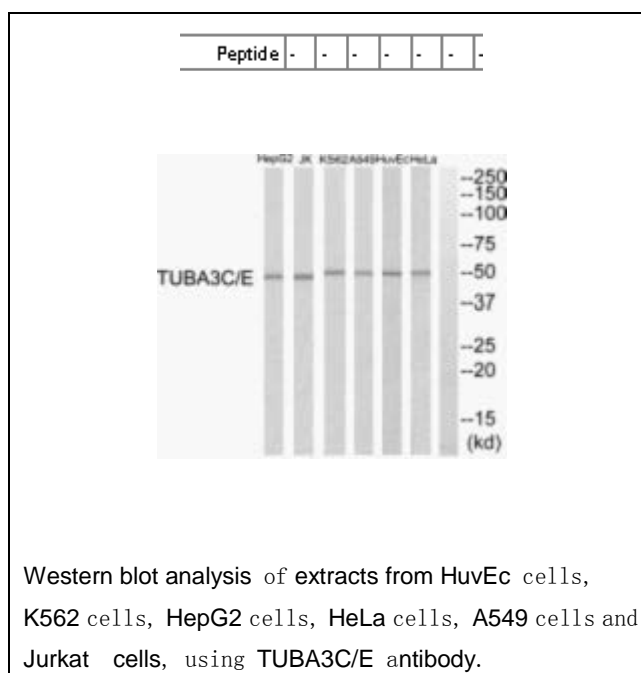
Rat (Identities = 100%, Positives = 100%)

Applications: WB: 1:500~1:1000 ELISA: 1:5000**References:**

Dode C., Genomics 47:125-130(1998).

Dunham A., Nature 428:522-528(2004).

Mural R.J., Submitted (JUL-2005) to the EMBL/GenBank/DDBJ databases.

**For Research Use Only**