



## CNNM2 Antibody

**E11-20929C****Catalog Number:** E11-20929C**Concentration:** 1mg/ml, 100ug/100ul**Swiss-Prot No.:** Q9H8M5**Other Names:** ACDP2; ancient conserved domain protein 2; cyclin M2; metal transporter CNNM2**Storage/Stability:** Store at -20°C/1 year**Form of Antibody:** Rabbit IgG in phosphate buffered saline (without  $Mg^{2+}$  and  $Ca^{2+}$ ), pH 7.4, 150mM NaCl, 0.02% sodium azide and 50% glycerol.**Immunogen:** The antiserum was produced against synthesized peptide derived from internal of human CNNM2.**Purification:** The antibody was affinity-purified from rabbit antiserum by affinity-chromatography using epitope-specific immunogen.**Specificity:** CNNM2 antibody detects endogenous levels of total CNNM2 protein.**Reactivity:** Human (Identities = 100%, Positives = 100%);

Mouse (Identities = 100%, Positives = 100%);

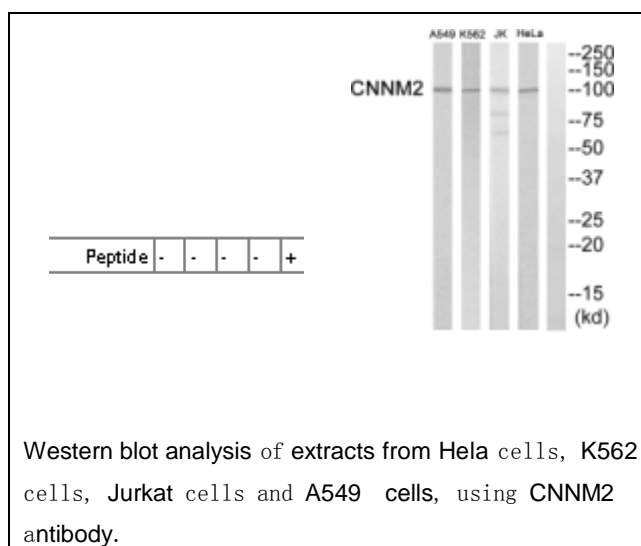
Rat (Identities = 100%, Positives = 100%)

**Applications:** WB: 1:500~1:1000 ELISA: 1:10000**References:**

Ota T., Nat. Genet. 36:40-45(2004).

Deloukas P., Nature 429:375-381(2004).

Wang C.-Y., Gene 306:37-44(2003).

**For Research Use Only**