



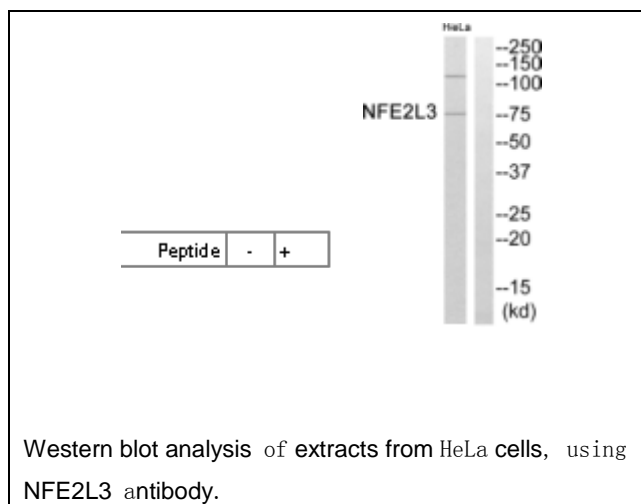
## NFE2L3 Antibody

**E11-20959C****Catalog Number:** E11-20959C**Concentration:** 1mg/ml, 100ug/100ul**Swiss-Prot No.:** Q9Y4A8**Other Names:** Nuclear factor erythroid 2-related factor 3; NF-E2-related factor 3; NFE2-related factor 3; Nuclear factor, erythroid derived 2, like 3; NFE2L3; NRF3**Storage/Stability:** Store at -20°C/1 year**Form of Antibody:** Rabbit IgG in phosphate buffered saline (without  $Mg^{2+}$  and  $Ca^{2+}$ ), pH 7.4, 150mM NaCl, 0.02% sodium azide and 50% glycerol.**Immunogen:** The antiserum was produced against synthesized peptide derived from internal of human NFE2L3.**Purification:** The antibody was affinity-purified from rabbit antiserum by affinity-chromatography using epitope-specific immunogen.**Specificity:** NFE2L3 antibody detects endogenous levels of total NFE2L3 protein.**Reactivity:** Human (Identities = 100%, Positives = 100%)**Applications:** WB: 1:500~1:1000 ELISA: 1:10000**References:**

Blank V., Submitted (MAR-1999) to the EMBL/GenBank/DDBJ databases.

Stoesz S.P., Submitted (MAR-1999) to the EMBL/GenBank/DDBJ databases.

Hillier L.W., Nature 424:157-164(2003).

**For Research Use Only**