



PTGIS Antibody

E11-20988C**Catalog Number:** E11-20988C**Concentration:** 1mg/ml**Swiss-Prot No.:** Q16647**Other Names:** CYP8; CYP8A1; cytochrome P450, family 8, subfamily A, polypeptide 1; MGC126858; MGC126860; PGIS; Prostacyclin synthase; prostaglandin I2 (prostacyclin) synthase; Prostaglandin I2 synthase; PTGI; PTGIS**Storage/Stability:** Store at -20 °C/1 year**Form of Antibody:** Rabbit IgG in phosphate buffered saline (without Mg²⁺ and Ca²⁺), pH 7.4, 150mM NaCl, 0.02% sodium azide and 50% glycerol.**Immunogen:** The antiserum was produced against synthesized peptide derived from Internal of human PTGIS.**Purification:** The antibody was affinity-purified from

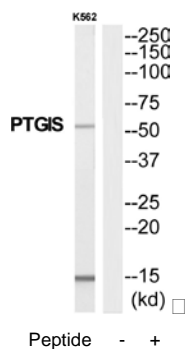
rabbit antiserum by affinity-chromatography using epitope-specific immunogen.

Specificity: PTGIS antibody detects endogenous levels of total PTGIS protein.**Reactivity:** Human; Mouse; Rat**Applications:** WB: 1:500~1:3000 ELISA: 1:40000**References:**

Miyata A., Biochem. Biophys. Res. Commun. 200:1728-1734(1994).

Chevalier D., Hum. Genet. 108:148-155(2001).

Deloukas P., Nature 414:865-871(2001).

**For Research Use Only**