



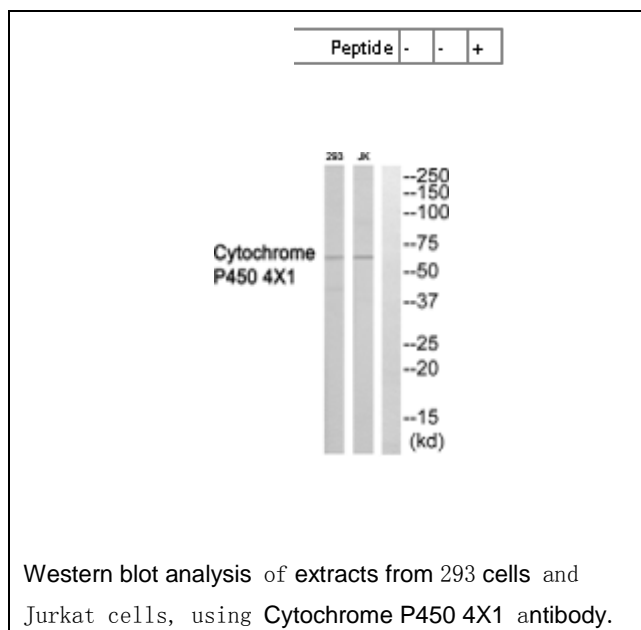
## Cytochrome P450 4X1 Antibody

**E11-21019C****Catalog Number:** E11-21019C**Concentration:** 1mg/ml, 100ug/100ul**Swiss-Prot No.:** Q8N118**Other Names:** Cytochrome P450 4X1; CYP4X1; CYP4X1**Storage/Stability:** Store at -20°C/1 year**Form of Antibody:** Rabbit IgG in phosphate buffered saline (without  $Mg^{2+}$  and  $Ca^{2+}$ ), pH 7.4, 150mM NaCl, 0.02% sodium azide and 50% glycerol.**Immunogen:** The antiserum was produced against synthesized peptide derived from internal of human Cytochrome P450 4X1.**Purification:** The antibody was affinity-purified from rabbit antiserum by affinity-chromatography using epitope-specific immunogen.**Specificity:** Cytochrome P450 4X1 antibody detects endogenous levels of total Cytochrome P450 4X1 protein.**Reactivity:** Human (Identities = 100%, Positives = 100%)**Applications:** WB: 1:500~1:1000 ELISA: 1:10000**References:**

Clark H.F., Genome Res. 13:2265-2270(2003).

Ota T., Nat. Genet. 36:40-45(2004).

The MGC Project Team, Genome Res. 14:2121-2127(2004).

**For Research Use Only**