



CYP2D6 Antibody

E11-21046C**Catalog Number:** E11-21046C**Concentration:** 1mg/ml**Swiss-Prot No.:** P10635

Other Names: CP2D6; CPD6; CYP2D; CYP2D6;
CYP2D7AP; CYP2D7BP; CYP2D7P2; CYP2D8P2;
CYP2D@; CYP2DL1; CYPID6; Cytochrome P450 2D6;
cytochrome P450, family 2, subfamily D, polypeptide 6;
cytochrome P450, family 2, subfamily D, polypeptide 7
pseudogene 2; cytochrome P450, family 2, subfamily D,
polypeptide 8 pseudogene 2; cytochrome P450, subfamily
II (debrisoquine, sparteine, etc., -metabolising),
polypeptide 7 pseudogene 2; cytochrome P450, subfamily
IID (debrisoquine, sparteine, etc., -metabolising),
polypeptide 8 pseudogene 2; cytochrome P450, subfamily
IID (debrisoquine, sparteine, etc., -metabolizing),
polypeptide 6; cytochrome P450, subfamily IID
(debrisoquine, sparteine, etc., -metabolizing)-like 1;
Cytochrome P450-DB1; Debrisoquine 4-hydroxylase;
flavoprotein-linked monooxygenase; MGC120389;
MGC120390; microsomal monooxygenase; P450-DB1;
P450C2D; P450DB1; xenobiotic monooxygenase

Storage/Stability: Store at -20 °C/1 year

Form of Antibody: Rabbit IgG in phosphate buffered
saline (without Mg^{2+} and Ca^{2+}), pH 7.4, 150mM NaCl,
0.02% sodium azide and 50% glycerol.

Immunogen: The antiserum was produced against
synthesized peptide derived from Internal of human
CYP2D6.

Purification: The antibody was affinity-purified from
rabbit antiserum by affinity-chromatography using
epitope-specific immunogen.

Specificity: CYP2D6 antibody detects endogenous levels
of total CYP2D6 protein.

Reactivity: Human

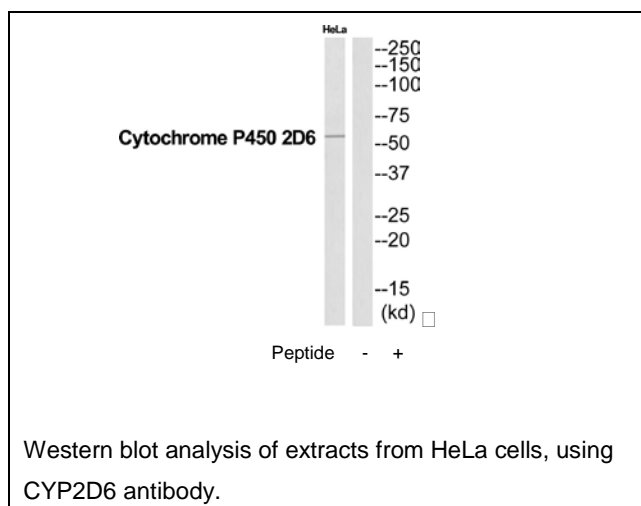
Applications: WB: 1:500~1:3000 ELISA: 1:40000

References:

Gonzalez F.J., Genomics 2:174-179(1988).

Gonzalez F.J., Nature 331:442-446(1988).

Kimura S., Am. J. Hum. Genet. 45:889-904(1989).

**For Research Use Only**