



SIRT2 Antibody

E11-21067C**Catalog Number:** E11-21067C**Concentration:** 1mg/ml, 100ug/100ul**Swiss-Prot No.:** Q8IXJ6**Other Names:** NAD-dependent deacetylase sirtuin-2; SIR2-like 2**Storage/Stability:** Store at -20°C/1 year**Form of Antibody:** Rabbit IgG in phosphate buffered saline (without Mg^{2+} and Ca^{2+}), pH 7.4, 150mM NaCl, 0.02% sodium azide and 50% glycerol.**Immunogen:** The antiserum was produced against synthesized peptide derived from C-terminal of human SIRT2.**Purification:** The antibody was affinity-purified from rabbit antiserum by affinity-chromatography using epitope-specific immunogen.**Specificity:** SIRT2 antibody detects endogenous levels of total SIRT2 protein.**Reactivity:** Human (Identities = 100%, Positives = 100%);

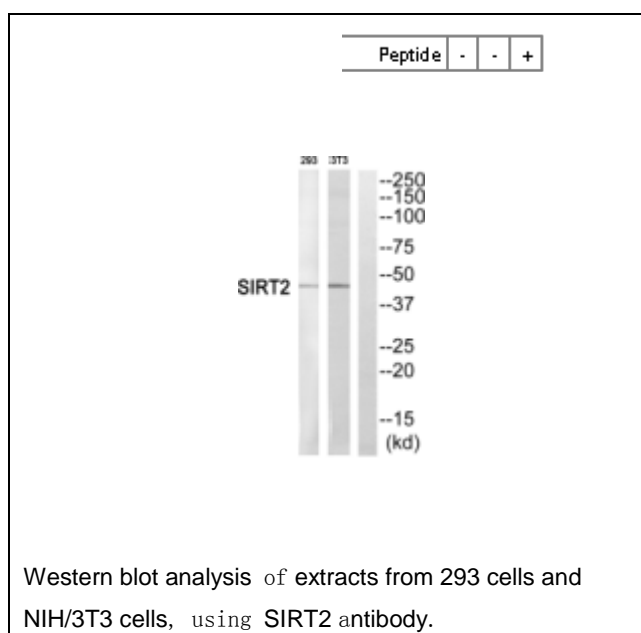
Mouse (Identities = 92%, Positives = 100%); Rat (Identities = 92%, Positives = 100%)

Applications: WB: 1:500~1:1000 ELISA: 1:5000**References:**

Frye R.A., Biochem. Biophys. Res. Commun. 260:273-279(1999).

Afshar G., Gene 234:161-168(1999).

De Smet C., J. Neurochem. 81:575-588(2002).

**For Research Use Only**