



## BAG3 Antibody

E11-21103C

**Catalog Number:** E11-21103C

**Concentration:** 1mg/ml, 100ug/100ul

**Swiss-Prot No.:** O95817

**Other Names:** BAG-3; BAG-family molecular chaperone regulator-3; BCL-2 binding athanogene- 3; Bcl-2-binding protein Bis; BIS; Docking protein CAIR-1

**Storage/Stability:** Store at -20°C/1 year

**Form of Antibody:** Rabbit IgG in phosphate buffered saline (without Mg<sup>2+</sup> and Ca<sup>2+</sup>), pH 7.4, 150mM NaCl, 0.02% sodium azide and 50% glycerol.

**Immunogen:** The antiserum was produced against synthesized peptide derived from internal of human BAG3.

**Purification:** The antibody was affinity-purified from rabbit antiserum by affinity-chromatography using epitope-specific immunogen.

**Specificity:** BAG3 antibody detects endogenous levels of total BAG3 protein.

**Reactivity:** Human (Identities = 100%, Positives = 100%);

Mouse (Identities = 92%, Positives = 100%);

Rat (Identities = 100%, Positives = 100%)

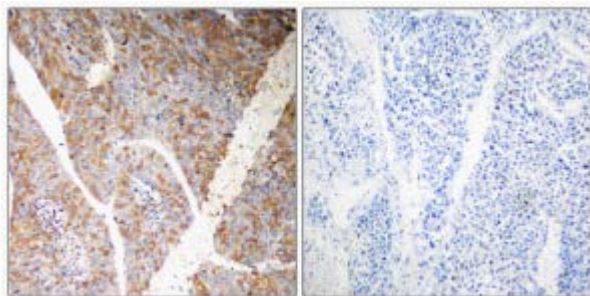
**Applications:** WB: 1:500~1:1000 IHC: 1:50~1:100 ELISA: 1:40000

### References:

Takayama S., J. Biol. Chem. 274:781-786(1999).

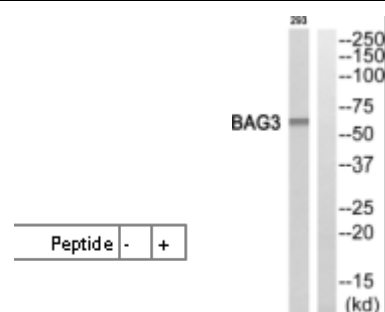
Lee J.H., Oncogene 18:6183-6190(1999).

Doong H., Oncogene 19:4385-4395(2000).



Peptide - +

Immunohistochemistry analysis of paraffin-embedded human liver carcinoma tissue, using BAG3 antibody.



Western blot analysis of extracts from 293 cells, using BAG3 antibody.

**For Research Use Only**