



MAGEC2 Antibody

E11-21110C**Catalog Number:** E11-21110C**Concentration:** 1mg/ml, 100ug/100ul**Swiss-Prot No.:** Q9UBF1

Other Names: Cancer/testis antigen 10; CT10; HCA587; hepatocellular cancer antigen 587; Hepatocellular carcinoma-associated antigen 587; MAGC2; MAGE-C2 antigen; MAGE-E1 antigen; MAGEC2; MAGEE1; melanoma antigen family C, 2; melanoma antigen, family E, 1, cancer/testis specific; Melanoma-associated antigen C2; MGC13377

Storage/Stability: Store at -20°C/1 year

Form of Antibody: Rabbit IgG in phosphate buffered saline (without Mg^{2+} and Ca^{2+}), pH 7.4, 150mM NaCl, 0.02% sodium azide and 50% glycerol.

Immunogen: The antiserum was produced against synthesized peptide derived from internal of human MAGEC2.

Purification: The antibody was affinity-purified from rabbit antiserum by affinity-chromatography using epitope-specific immunogen.

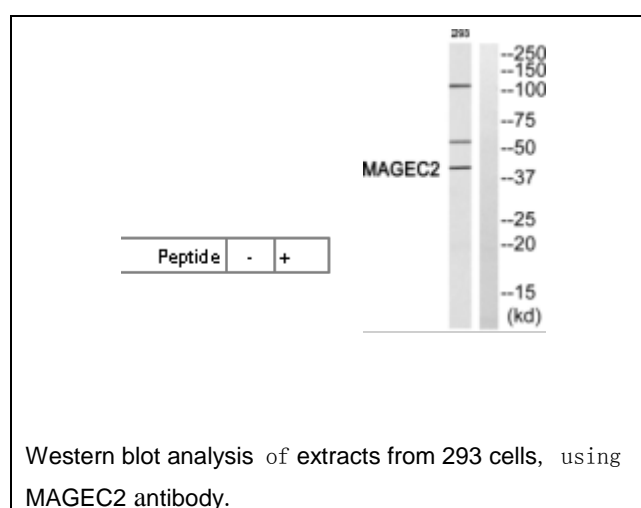
Specificity: MAGEC2 antibody detects endogenous levels of total MAGEC2 protein.

Reactivity: Human**Applications:** WB: 1:500~1:1000 ELISA: 1:1000**References:**

Gure A.O., Int. J. Cancer 85:726-732(2000) [PubMed: 10699956].

Lucas S., Int. J. Cancer 87:55-60(2000) [PubMed: 10861452].

Wang Y., J. Immunol. 169:1102-1109(2002) [PubMed: 12097419].

**For Research Use Only**