



DDR1 Antibody

E11-21132C**Catalog Number:** E11-21132C**Concentration:** 1mg/ml, 100ug/100ul**Swiss-Prot No.:** Q08345

Other Names: Epithelial discoidin domain-containing receptor 1; Epithelial discoidin domain receptor 1; CD167 antigen-like family member A; Cell adhesion kinase; Discoidin receptor tyrosine kinase; HGK2; Mammary carcinoma kinase 10; MCK-10; Protein-tyrosine kinase 3A; Protein-tyrosine kinase RTK-6; TRK E; Tyrosine kinase DDR; Tyrosine-protein kinase CAK; CD167a ; DDR1 ; CAK; EDDR1; NEP; NTRK4; PTK3A; RTK6; TRKE

Storage/Stability: Store at -20°C/1 year

Form of Antibody: Rabbit IgG in phosphate buffered saline (without Mg^{2+} and Ca^{2+}), pH 7.4, 150mM NaCl, 0.02% sodium azide and 50% glycerol.

Immunogen: The antiserum was produced against synthesized peptide derived from internal of human DDR1.

Purification: The antibody was affinity-purified from rabbit antiserum by affinity-chromatography using epitope-specific immunogen.

Specificity: DDR1 antibody detects endogenous levels of total DDR1 protein.

Reactivity: Human (Identities = 100%, Positives = 100%)

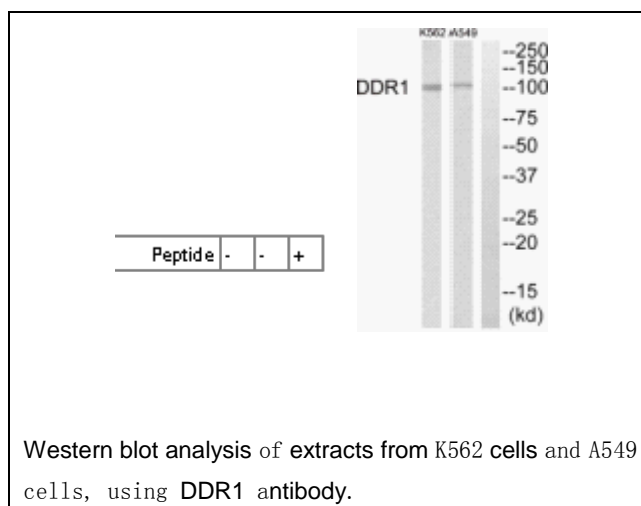
Applications: WB: 1:500~1:1000 ELISA: 1:20000

References:

di Marco E., J. Biol. Chem. 268:24290-24295(1993).

Johnson J.D., Proc. Natl. Acad. Sci. U.S.A. 90:5677-5681(1993).

Laval S., Cell Growth Differ. 5:1173-1183(1994).

**For Research Use Only**