



EPHA5 Antibody

E11-21141C**Catalog Number:** E11-21141C**Concentration:** 1mg/ml, 100ug/100ul**Swiss-Prot No.:** P54756**Other Names:** EHK1; Eph homology kinase-1; Ephrin type-A receptor 5 precursor; HEK7; Receptor protein- tyrosine kinase HEK7; Tyrosine-protein kinase receptor EHK-1**Storage/Stability:** Store at -20°C/1 year**Form of Antibody:** Rabbit IgG in phosphate buffered saline (without Mg^{2+} and Ca^{2+}), pH 7.4, 150mM NaCl, 0.02% sodium azide and 50% glycerol.**Immunogen:** The antiserum was produced against synthesized peptide derived from internal of human EPHA5.**Purification:** The antibody was affinity-purified from rabbit antiserum by affinity-chromatography using epitope-specific immunogen.**Specificity:** EPHA5 antibody detects endogenous levels of total EPHA5 protein.**Reactivity:** Human (Identities = 100%, Positives = 100%) ;

Mouse (Identities = 100%, Positives = 100%) ;

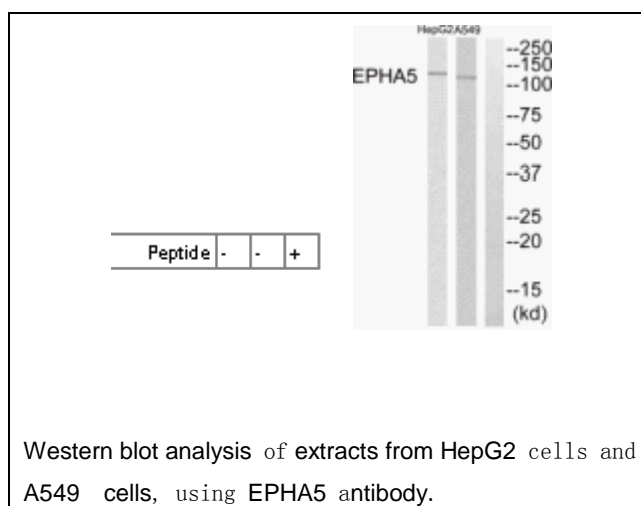
Rat (Identities = 100%, Positives = 100%)

Applications: WB: 1:500~1:1000 ELISA: 1:20000**References:**

Miescher G.C., Brain Res. Mol. Brain Res. 46:17-24(1997).

Hillier L.W., Nature 434:724-731(2005).

Bechtel S., BMC Genomics 8:399-399(2007).

**For Research Use Only**