



EPHB1 Antibody

E11-21143C**Catalog Number:** E11-21143C**Concentration:** 1mg/ml, 100ug/100ul**Swiss-Prot No.:** P54762**Other Names:** ELK; EPB1; Eph receptor B1; Ephrin type-B receptor 1 precursor; EPHT2; EPTH2; HEK6; kinase EphB1; NET; Tyrosine-protein kinase receptor EPH-2**Storage/Stability:** Store at -20°C/1 year**Form of Antibody:** Rabbit IgG in phosphate buffered saline (without Mg^{2+} and Ca^{2+}), pH 7.4, 150mM NaCl, 0.02% sodium azide and 50% glycerol.**Immunogen:** The antiserum was produced against synthesized peptide derived from C-terminal of human EPHB1.**Purification:** The antibody was affinity-purified from rabbit antiserum by affinity-chromatography using epitope-specific immunogen.**Specificity:** EPHB1 antibody detects endogenous levels of total EPHB1 protein.**Reactivity:** Human (Identities = 100%, Positives = 100%) ;

Mouse (Identities = 100%, Positives = 100%) ;

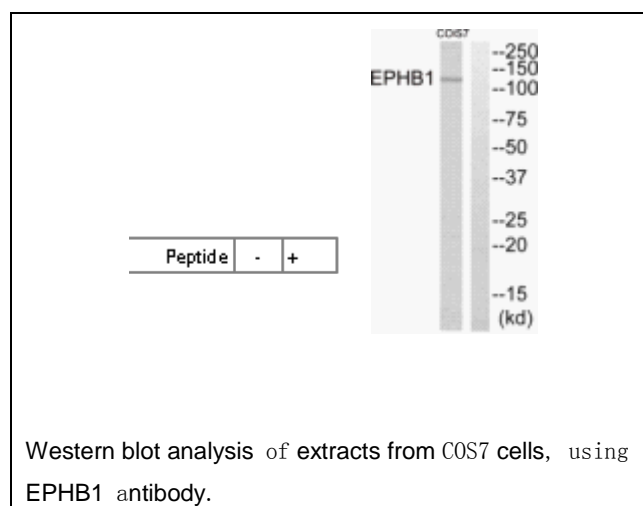
Rat (Identities = 100%, Positives = 100%)

Applications: WB: 1:500~1:1000 ELISA: 1:20000**References:**

Tang X.X., Genomics 29:426-437(1995).

Stein E., Submitted (DEC-1997) to the EMBL/GenBank/DDBJ databases.

Ota T., Nat. Genet. 36:40-45(2004).

**For Research Use Only**