



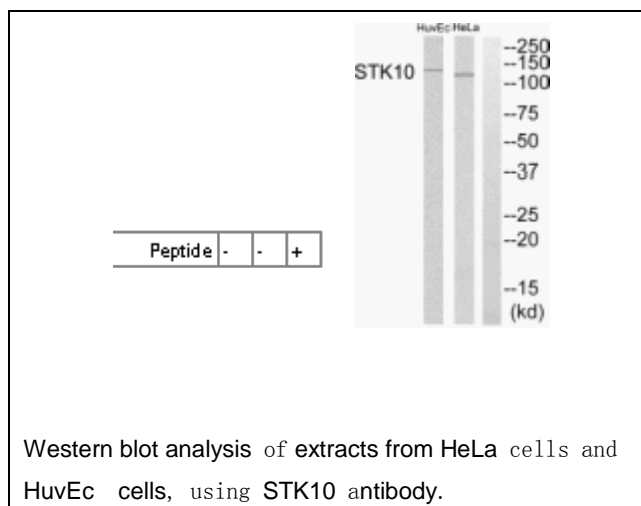
## STK10 Antibody

**E11-21152C****Catalog Number:** E11-21152C**Concentration:** 1mg/ml, 100ug/100ul**Swiss-Prot No.:** O94804**Other Names:** kinase GEK2; LOK; Lymphocyte-oriented kinase; Serine/threonine protein kinase 10; STK10**Storage/Stability:** Store at -20°C/1 year**Form of Antibody:** Rabbit IgG in phosphate buffered saline (without  $Mg^{2+}$  and  $Ca^{2+}$ ), pH 7.4, 150mM NaCl, 0.02% sodium azide and 50% glycerol.**Immunogen:** The antiserum was produced against synthesized peptide derived from internal of human STK10.**Purification:** The antibody was affinity-purified from rabbit antiserum by affinity-chromatography using epitope-specific immunogen.**Specificity:** STK10 antibody detects endogenous levels of total STK10 protein.**Reactivity:** Human (Identities = 100%, Positives = 100%)**Applications:** WB: 1:500~1:1000 ELISA: 1:20000**References:**

Kuramochi S., Immunogenetics 49:369-375(1999).

Ota T., Nat. Genet. 36:40-45(2004).

Schmutz J., Nature 431:268-274(2004).

**For Research Use Only**