



MRCKa Antibody

E11-21158C**Catalog Number:** E11-21158C**Concentration:** 1mg/ml**Swiss-Prot No.:** Q5VT25

Other Names: CDC42 binding protein kinase alpha (DMPK-like); CDC42 binding protein kinase beta; CDC42-binding protein kinase alpha; CDC42-binding protein kinase alpha (DMPK-like); CDC42BPA; DKFZp686L1738; DKFZp686P1738; DMPK-like alpha; FLJ23347; KIAA0451; MRCK; MRCK alpha; MRCKa; Myotonic dystrophy kinase-related CDC42-binding kinase alpha; myotonic dystrophy kinase-related CDC42-binding protein kinase alpha; Myotonic dystrophy protein kinase-like alpha; PK428; ser-thr protein kinase PK428; ser-thr protein kinase related to the myotonic dystrophy protein kinase; Serine/threonine-protein kinase MRCK alpha

Storage/Stability: Store at -20 °C/1 year**Form of Antibody:** Rabbit IgG in phosphate buffered

saline (without Mg^{2+} and Ca^{2+}), pH 7.4, 150mM NaCl, 0.02% sodium azide and 50% glycerol.

Immunogen: The antiserum was produced against synthesized peptide derived from Internal of human MRCKa.

Purification: The antibody was affinity-purified from rabbit antiserum by affinity-chromatography using epitope-specific immunogen.

Specificity: MRCKa antibody detects endogenous levels of total MRCKa protein.

Reactivity: Human; Mouse; Rat

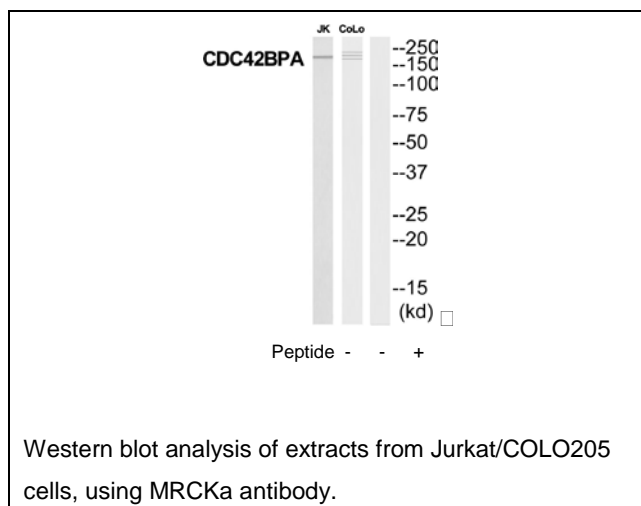
Applications: WB: 1:500~1:3000 ELISA: 1:40000

References:

Wilkinson S., Nat. Cell Biol. 7:255-261(2005).

Totoki Y., Submitted (MAR-2005) to the EMBL/GenBank/DDBJ databases.

Bechtel S., BMC Genomics 8:399-399(2007).

**For Research Use Only**