



PKN1/PRK1 Antibody

E11-21184C**Catalog Number:** E11-21184C**Concentration:** 1mg/ml**Swiss-Prot No.:** Q16512**Other Names:** DBK; MGC46204; PAK1; PKN; PKN-ALPHA; PKN1; PRK1; PRKCL1; Protein kinase C-like 1; Protein kinase C-like PKN; protein kinase C-related kinase 1; protein kinase N1; Protein kinase PKN-alpha; Protein-kinase C-related kinase 1; serine-threonine kinase N; Serine-threonine protein kinase N; serine/threonine protein kinase N; Serine/threonine-protein kinase N1**Storage/Stability:** Store at -20 °C/1 year**Form of Antibody:** Rabbit IgG in phosphate buffered saline (without Mg^{2+} and Ca^{2+}), pH 7.4, 150mM NaCl, 0.02% sodium azide and 50% glycerol.**Immunogen:** The antiserum was produced against synthesized peptide derived from Internal of human

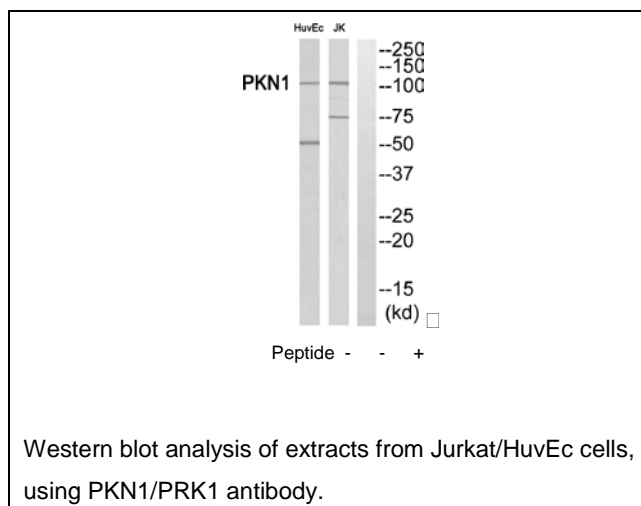
PKN1/PRK1.

Purification: The antibody was affinity-purified from rabbit antiserum by affinity-chromatography using epitope-specific immunogen.**Specificity:** PKN1/PRK1 antibody detects endogenous levels of total PKN1/PRK1 protein.**Reactivity:** Human; Mouse; Rat**Applications:** WB: 1:500~1:3000 ELISA: 1:20000**References:**

Mukai H., Biochem. Biophys. Res. Commun. 199:897-904(1994).

Palmer R.H., Eur. J. Biochem. 227:344-351(1995).

Grimwood J., Nature 428:529-535(2004).

**For Research Use Only**