



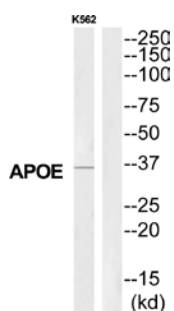
APOE Antibody

E11-21238C**Catalog Number:** E11-21238C**Concentration:** 1mg/ml**Swiss-Prot No.:** P02649**Other Names:** AD2; Apo-E; APOE; Apolipoprotein E; apolipoprotein E3; LDLQC5; LPG; MGC1571**Storage/Stability:** Store at -20 °C/1 year**Form of Antibody:** Rabbit IgG in phosphate buffered saline (without Mg^{2+} and Ca^{2+}), pH 7.4, 150mM NaCl, 0.02% sodium azide and 50% glycerol.**Immunogen:** The antiserum was produced against synthesized peptide derived from C-terminal of human APOE.**Purification:** The antibody was affinity-purified from rabbit antiserum by affinity-chromatography using epitope-specific immunogen.**Specificity:** APOE antibody detects endogenous levels of total APOE protein.**Reactivity:** Human (Identities = 100%, Positives = 100%);
Mouse (Identities = 100%, Positives = 100%);
Rat (Identities = 100%, Positives = 100%)**Applications:** WB: 1:500~1:3000 ELISA: 1:10000**References:**

Zannis V.I., J. Biol. Chem. 259:5495-5499(1984).

McLean J.W., J. Biol. Chem. 259:6498-6504(1984).

Paik Y.-K., Proc. Natl. Acad. Sci. U.S.A. 82:3445-3449(1985).



Western blot analysis of extracts from K562 cells, using APOE antibody.

For Research Use Only