



## LRP8 Antibody

E11-21241C

**Catalog Number:** E11-21241C

**Concentration:** 1mg/ml, 100ug/100ul

**Swiss-Prot No.:** Q14114

**Other Names:** Low-density lipoprotein receptor-related protein 8; Apolipoprotein E receptor 2; APOER2

**Storage/Stability:** Store at -20°C/1 year

**Form of Antibody:** Rabbit IgG in phosphate buffered saline (without Mg<sup>2+</sup> and Ca<sup>2+</sup>), pH 7.4, 150mM NaCl, 0.02% sodium azide and 50% glycerol.

**Immunogen:** The antiserum was produced against synthesized peptide derived from internal of human LRP8.

**Purification:** The antibody was affinity-purified from rabbit antiserum by affinity-chromatography using epitope-specific immunogen.

**Specificity:** LRP8 antibody detects endogenous levels of total LRP8 protein.

**Reactivity:** Human (Identities = 100%, Positives = 100%)

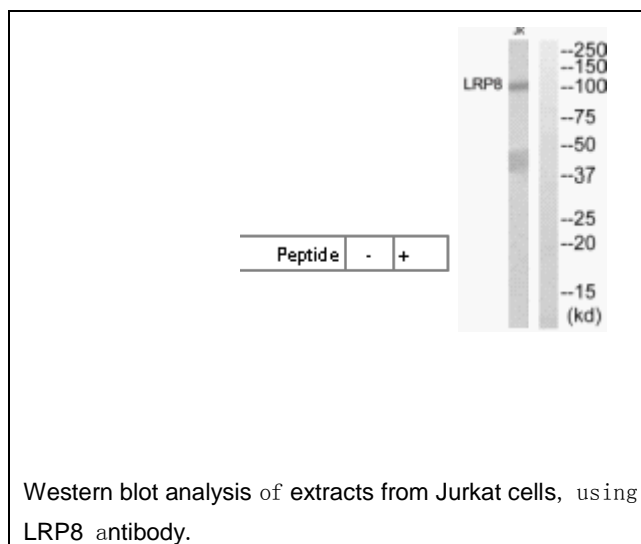
**Applications:** WB: 1:500~1:1000 ELISA: 1:40000

**References:**

Bentley D.R., Nature 441:315-321(2006).

Owen J.S., FEBS Lett. 540:181-187(2003).

Zelcer N., J. Biol. Chem. 285:19720-19726(2010).



**For Research Use Only**