



ERI1 Antibody

E11-21254C**Catalog Number:** E11-21254C**Concentration:** 1mg/ml, 100ug/100ul**Swiss-Prot No.:** Q8IV48**Other Names:** 3'-5' exoribonuclease 1;3'-5' exonuclease ERI1;Eri-1 homolog;Histone mRNA 3'-end-specific exoribonuclease;Histone mRNA 3'-exonuclease 1;Protein 3'hExo;HEXO ;ERI1 ;3'EXO; THEX1**Storage/Stability:** Store at -20°C/1 year**Form of Antibody:** Rabbit IgG in phosphate buffered saline (without Mg^{2+} and Ca^{2+}), pH 7.4, 150mM NaCl, 0.02% sodium azide and 50% glycerol.**Immunogen:** The antiserum was produced against synthesized peptide derived from internal of human ERI1.**Purification:** The antibody was affinity-purified from rabbit antiserum by affinity-chromatography using epitope-specific immunogen.**Specificity:** ERI1 antibody detects endogenous levels of total ERI1 protein.**Reactivity:** Human (Identities = 100%, Positives = 100%);

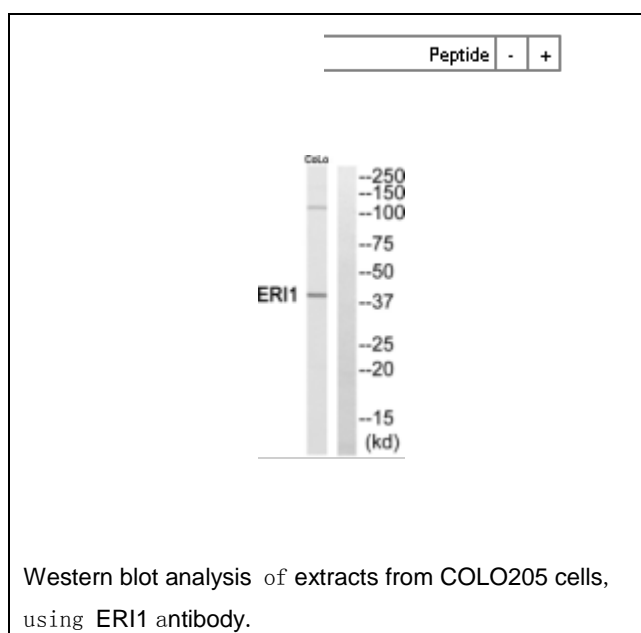
Mouse (Identities = 94%, Positives = 94%); Rat (Identities = 94%, Positives = 94%)

Applications: WB: 1:500~1:1000 ELISA: 1:5000**References:**

Dominski Z., Mol. Cell 12:295-305(2003).

Ota T., Nat. Genet. 36:40-45(2004).

Bechtel S., BMC Genomics 8:399-399(2007).

**For Research Use Only**