



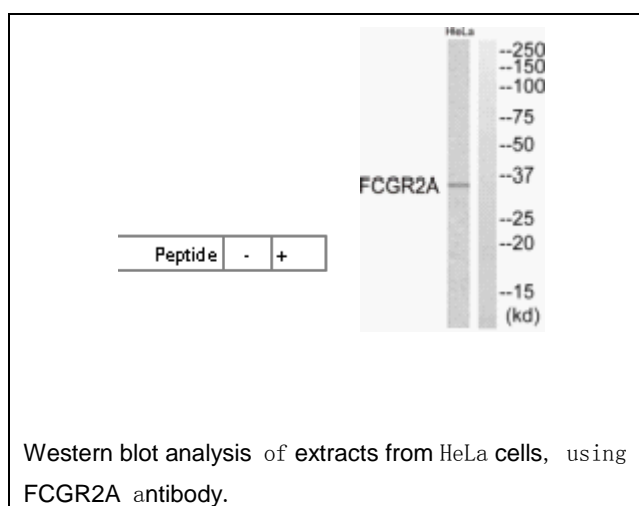
## FCGR2A Antibody

**E11-21265C****Catalog Number:** E11-21265C**Concentration:** 1mg/ml, 100ug/100ul**Swiss-Prot No.:** P12318**Other Names:** Low affinity immunoglobulin gamma Fc region receptor II-a; IgG Fc receptor II-a; Fc-gamma RII-a; Fc-gamma-RIIa; FcRII-a; CDw32; CD32; FCGR2A; CD32; FCG2; FCGR2A1; IGFR2**Storage/Stability:** Store at -20°C/1 year**Form of Antibody:** Rabbit IgG in phosphate buffered saline (without  $Mg^{2+}$  and  $Ca^{2+}$ ), pH 7.4, 150mM NaCl, 0.02% sodium azide and 50% glycerol.**Immunogen:** The antiserum was produced against synthesized peptide derived from C-terminal of human FCGR2A.**Purification:** The antibody was affinity-purified from rabbit antiserum by affinity-chromatography using epitope-specific immunogen.**Specificity:** FCGR2A antibody detects endogenous levels of total FCGR2A protein.**Reactivity:** Human (Identities = 100%, Positives = 100%)**Applications:** WB: 1:500~1:1000 ELISA: 1:20000**References:**

Stuart S.G., J. Exp. Med. 166:1668-1684(1987).

Brooks D.G., J. Exp. Med. 170:1369-1385(1989).

Gregory S.G., Nature 441:315-321(2006).

**For Research Use Only**