



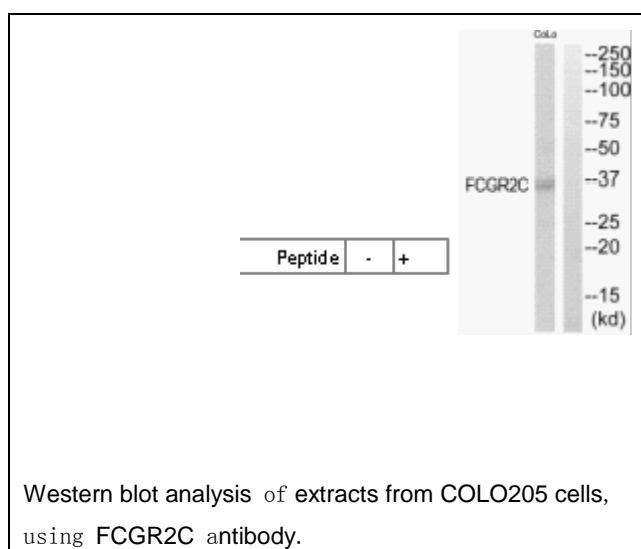
## FCGR2C Antibody

**E11-21266C****Catalog Number:** E11-21266C**Concentration:** 1mg/ml, 100ug/100ul**Swiss-Prot No.:** P31995**Other Names:** Low affinity immunoglobulin gamma Fc region receptor II-c; IgG Fc receptor II-c; Fc-gamma RII-c; Fc-gamma-RIIc; FcRII-c; CDw32; CD32; FCGR2C; CD32, FCG2, IGFR2**Storage/Stability:** Store at -20°C/1 year**Form of Antibody:** Rabbit IgG in phosphate buffered saline (without  $Mg^{2+}$  and  $Ca^{2+}$ ), pH 7.4, 150mM NaCl, 0.02% sodium azide and 50% glycerol.**Immunogen:** The antiserum was produced against synthesized peptide derived from internal of human FCGR2C.**Purification:** The antibody was affinity-purified from rabbit antiserum by affinity-chromatography using epitope-specific immunogen.**Specificity:** FCGR2C antibody detects endogenous levels of total FCGR2C protein.**Reactivity:** Human (Identities = 100%, Positives = 100%)**Applications:** WB: 1:500~1:1000 ELISA: 1:40000**References:**

Mellman I., EMBO J. 8:3657-3666(1989).

Morel P.A., Blood 91:2369-2380(1998).

Comb M.J., Cell 131:1190-1203(2007).

**For Research Use Only**