

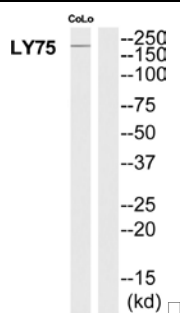


LY75 Antibody

E11-21294C**Catalog Number:** E11-21294C**Concentration:** 1mg/ml**Swiss-Prot No.:** O60449**Other Names:** C-type lectin domain family 13 member B; CD205; CLEC13B; DEC-205; gp200-MR6; Ly-75; LY75; Lymphocyte antigen 75**Storage/Stability:** Store at -20 °C/1 year**Form of Antibody:** Rabbit IgG in phosphate buffered saline (without Mg^{2+} and Ca^{2+}), pH 7.4, 150mM NaCl, 0.02% sodium azide and 50% glycerol.**Immunogen:** The antiserum was produced against synthesized peptide derived from Internal of human LY75.**Purification:** The antibody was affinity-purified from rabbit antiserum by affinity-chromatography using epitope-specific immunogen.**Specificity:** LY75 antibody detects endogenous levels of total LY75 protein.**Reactivity:** Human**Applications:** WB: 1:500~1:3000 ELISA: 1:40000**References:**

McKay P.F., Eur. J. Immunol. 28:4071-4083(1998).

Kato M., Immunogenetics 47:442-450(1998).



Western blot analysis of extracts from COLO205 cells, using LY75 antibody.

For Research Use Only