



FAM3D Antibody

E11-21520C**Catalog Number:** E11-21520C**Concentration:** 1mg/ml**Swiss-Prot No.:** Q96BQ1**Other Names:** cytokine-like protein EF-7; EF7; FAM3D; family with sequence similarity 3, member D; OIT1; Protein FAM3D**Storage/Stability:** Store at -20 °C/1 year**Form of Antibody:** Rabbit IgG in phosphate buffered saline (without Mg^{2+} and Ca^{2+}), pH 7.4, 150mM NaCl, 0.02% sodium azide and 50% glycerol.**Immunogen:** The antiserum was produced against synthesized peptide derived from C-terminal of human FAM3D.**Purification:** The antibody was affinity-purified from

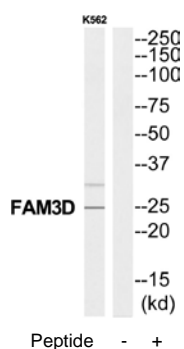
rabbit antiserum by affinity-chromatography using epitope-specific immunogen.

Specificity: FAM3D antibody detects endogenous levels of total FAM3Dprotein.**Reactivity:** Human**Applications:** WB: 1:500~1:1000 ELISA: 1:40000**References:**

Zhu Y., Genomics 80:144-150(2002).

Clark H.F., Genome Res. 13:2265-2270(2003).

Ramachandran P., J. Proteome Res. 5:1493-1503(2006).

**For Research Use Only**