



INA Antibody

E11-21539C**Catalog Number:** E11-21539C**Concentration:** 1mg/ml**Swiss-Prot No.:** Q16352

Other Names: 66 kDa neurofilament protein; AINX; Alpha-internexin; Alpha-Inx; FLJ18662; FLJ57501; INA; internexin neuronal intermediate filament protein, alpha; MGC12702; NEF5; Neurofilament 5; neurofilament 5 (66kD); Neurofilament-66; neurofilament-66, tax-binding protein; NF-66; TXBP-1

Storage/Stability: Store at -20 °C/1 year

Form of Antibody: Rabbit IgG in phosphate buffered saline (without Mg^{2+} and Ca^{2+}), pH 7.4, 150mM NaCl, 0.02% sodium azide and 50% glycerol.

Immunogen: The antiserum was produced against synthesized peptide derived from Internal of human INA.

Purification: The antibody was affinity-purified from rabbit antiserum by affinity-chromatography using epitope-specific immunogen.

Specificity: INA antibody detects endogenous levels of total INA protein.

Reactivity: Human; Mouse; Rat

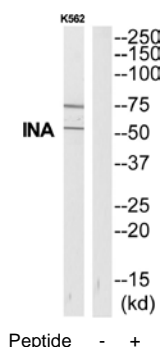
Applications: WB: 1:500~1:1000 ELISA: 1:40000

References:

Chan S.-O., Brain Res. Mol. Brain Res. 29:177-184(1995).

Deloukas P., Nature 429:375-381(2004).

Mural R.J., Submitted (SEP-2005) to the EMBL/GenBank/DDBJ databases.



Western blot analysis of extracts from K562 cells, using INA antibody.

For Research Use Only