



## RUNX3 Antibody

**E11-21587C****Catalog Number:** E11-21587C**Concentration:** 1mg/ml**Swiss-Prot No.:** Q13761

**Other Names:** Acute myeloid leukemia 2 protein; acute myeloid leukemia gene 2; AML2; CBF-alpha-3; CBFA3; Core-binding factor subunit alpha-3; core-binding factor, runt domain, alpha subunit 3; FLJ34510; MGC16070; Oncogene AML-2; PEA2 alpha C; PEA2-alpha C; PEBP2 alpha C; PEBP2-alpha C; PEBP2A3; PEBP2aC; Polyomavirus enhancer-binding protein 2 alpha C subunit; Runt-related transcription factor 3; RUNX3; SL3-3 enhancer factor 1 alpha C subunit; SL3/AKV core-binding factor alpha C subunit; transcription factor AML2

**Storage/Stability:** Store at -20 °C/1 year

**Form of Antibody:** Rabbit IgG in phosphate buffered saline (without  $Mg^{2+}$  and  $Ca^{2+}$ ), pH 7.4, 150mM NaCl, 0.02% sodium azide and 50% glycerol.

**Immunogen:** The antiserum was produced against synthesized peptide derived from Internal of human RUNX3.

**Purification:** The antibody was affinity-purified from rabbit antiserum by affinity-chromatography using epitope-specific immunogen.

**Specificity:** RUNX3 antibody detects endogenous levels of total RUNX3 protein.

**Reactivity:** Human

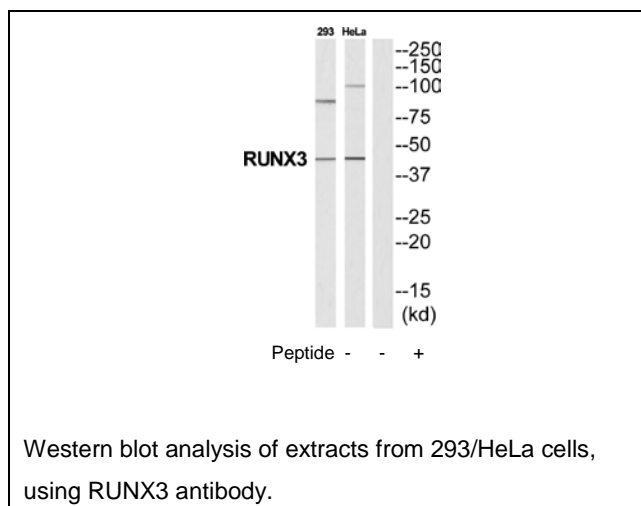
**Applications:** WB: 1:500~1:3000 ELISA: 1:20000

**References:**

Bae S.-C., Gene 159:245-248(1995).

Levanon D., Genomics 23:425-432(1994).

Gregory S.G., Nature 441:315-321(2006).



**For Research Use Only**