



EDG3 Antibody

E11-235G**Catalog Number:** E11-235G**Concentration:** 1mg/ml, 100ug/100uL**Swiss-Prot No.:** Q99500**Other Names:** Sphingosine 1-phosphate receptor 3; S1P receptor 3; S1P3; Sphingosine 1-phosphate receptor Edg-3; S1P receptor Edg-3; Endothelial differentiation G-protein coupled receptor 3; S1PR3; EDG3**Storage/Stability:** Store at -20°C/1 year**Form of Antibody:** Rabbit IgG in phosphate buffered saline (without Mg^{2+} and Ca^{2+}), pH 7.4, 150mM NaCl, 0.02% sodium azide and 50% glycerol.**Immunogen:** The antiserum was produced against synthesized peptide derived from internal of human

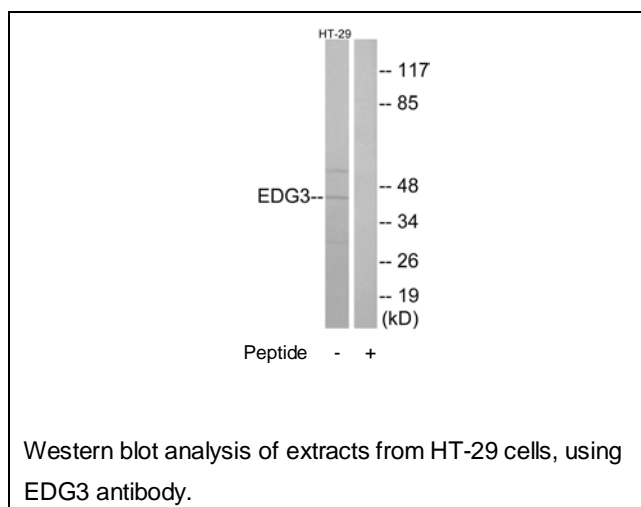
EDG3.

Purification: The antibody was affinity-purified from rabbit antiserum by affinity-chromatography using epitope-specific immunogen.**Specificity:** EDG3 antibody detects endogenous levels of total EDG3 protein.**Reactivity:** Human, Mouse, Rat**Applications:** WB: 1:500~1:1000 ELISA: 1:40000**References:**

Yamaguchi F., Biochem. Biophys. Res. Commun. 227:608-614(1996).

An S., FEBS Lett. 417:279-282(1997).

Humphray S.J., Nature 429:369-374(2004).

**For Research Use Only**