



EDG4 Antibody

E11-236G**Catalog Number:** E11-236G**Concentration:** 1mg/ml, 100ug/100uL**Swiss-Prot No.:** Q9HBW0**Other Names:** EDG-4; endothelial differentiation, lysophosphatidic acid G-protein-coupled receptor, 4; G protein-coupled receptor; LPA receptor 2; LPA receptor EDG4; LPA-2; LPA2; LPAR2; lysophosphatidic acid receptor Edg-4; lysophosphatidic acid receptor EDG4**Storage/Stability:** Store at -20°C/1 year**Form of Antibody:** Rabbit IgG in phosphate buffered saline (without Mg^{2+} and Ca^{2+}), pH 7.4, 150mM NaCl, 0.02% sodium azide and 50% glycerol.**Immunogen:** The antiserum was produced against synthesized peptide derived from internal of human

EDG4.

Purification: The antibody was affinity-purified from rabbit antiserum by affinity-chromatography using epitope-specific immunogen.**Specificity:** EDG4 antibody detects endogenous levels of total EDG4 protein.**Reactivity:** Human, Mouse**Applications:** WB: 1:500~1:1000 IF: 1:100~1:500

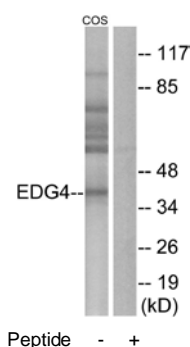
ELISA: 1:40000

References:

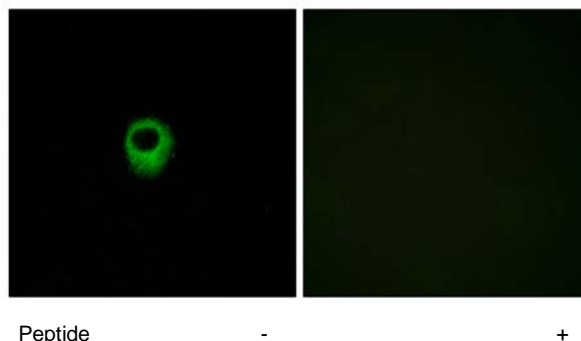
An S., J. Biol. Chem. 273:7906-7910(1998).

Bandoh K., FEBS Lett. 478:159-165(2000).

Grimwood J., Nature 428:529-535(2004).



Western blot analysis of extracts from COS-7 cells, using EDG4 antibody.



Immunofluorescence analysis of MCF-7 cells, using EDG4 antibody.

For Research Use Only