



## EDG5 Antibody

**E11-237G****Catalog Number:** E11-237G**Concentration:** 1mg/ml, 100ug/100uL**Swiss-Prot No.:** O95136**Other Names:** AGR16; EDG-5; endothelial differentiation G-protein coupled receptor 5; endothelial differentiation, sphingolipid G-protein-coupled receptor, 5; Gpcr13; H218; LPB2; S1P receptor Edg-5; S1P2; S1PR2; sphingosine 1-phosphate receptor 2**Storage/Stability:** Store at -20°C/1 year**Form of Antibody:** Rabbit IgG in phosphate buffered saline (without Mg<sup>2+</sup> and Ca<sup>2+</sup>), pH 7.4, 150mM NaCl, 0.02% sodium azide and 50% glycerol.**Immunogen:** The antiserum was produced against synthesized peptide derived from internal of human

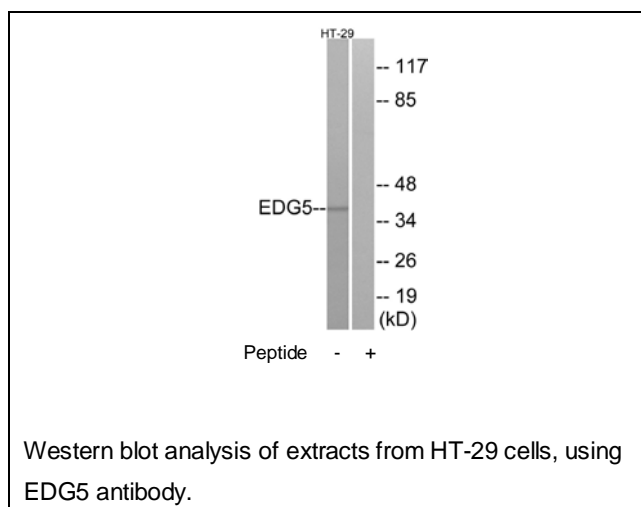
EDG5.

**Purification:** The antibody was affinity-purified from rabbit antiserum by affinity-chromatography using epitope-specific immunogen.**Specificity:** EDG5 antibody detects endogenous levels of total EDG5 protein.**Reactivity:** Human, Mouse, Rat**Applications:** WB: 1:500~1:1000 ELISA: 1:40000**References:**

An S., J. Biol. Chem. 275:288-296(2000).

Kopatz S.A., Submitted (MAR-2003) to the EMBL/GenBank/DDBJ databases.

The MGC Project Team; Genome Res. 14:2121-2127(2004)

**For Research Use Only**