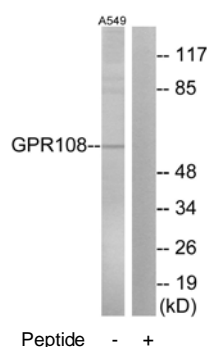




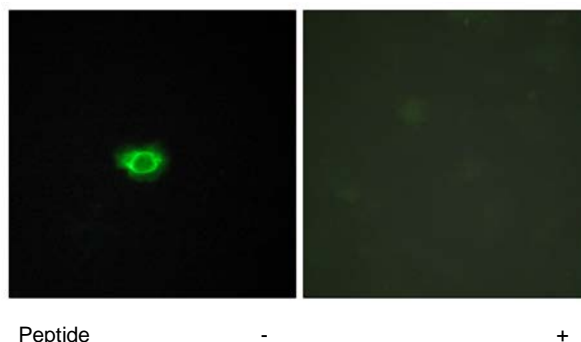
## GP108 Antibody

**E11-280G****Catalog Number:** E11-280G**Concentration:** 1mg/ml, 100ug/100uL**Swiss-Prot No.:** Q9NPR9**Other Names:** Protein GPR108 [Precursor]; Lung seven transmembrane receptor 2; GPR108; LUSTR2**Storage/Stability:** Store at -20°C/1 year**Form of Antibody:** Rabbit IgG in phosphate buffered saline (without  $Mg^{2+}$  and  $Ca^{2+}$ ), pH 7.4, 150mM NaCl, 0.02% sodium azide and 50% glycerol.**Immunogen:** The antiserum was produced against synthesized peptide derived from internal of human GP108.**Purification:** The antibody was affinity-purified from rabbit antiserum by affinity-chromatography using epitope-specific immunogen.**Specificity:** GP108 antibody detects endogenous levels of total GP108 protein.**Reactivity:** Human**Applications:** WB: 1:500~1:1000 IF: 1:100~1:500  
ELISA: 1:1000**References:**

The European IMAGE consortium; Submitted (JUL-2000) to the EMBL/GenBank/DDBJ databases.



Western blot analysis of extracts from A549 cells, using GP108 antibody.



Immunofluorescence analysis of HUVEC cells, using GP108 antibody.

**For Research Use Only**