



## GPR62 Antibody

**E11-348G**

**Catalog Number:** E11-348G

**Concentration:** 1mg/ml, 100ug/100uL

**Swiss-Prot No.:** Q9BZJ7

**Other Names:** Probable G-protein coupled receptor 62; hGPCR8; GPR62

**Storage/Stability:** Store at -20°C/1 year

**Form of Antibody:** Rabbit IgG in phosphate buffered saline (without  $Mg^{2+}$  and  $Ca^{2+}$ ), pH 7.4, 150mM NaCl, 0.02% sodium azide and 50% glycerol.

**Immunogen:** The antiserum was produced against synthesized peptide derived from internal of human GPR62.

**Purification:** The antibody was affinity-purified from rabbit antiserum by affinity-chromatography using epitope-specific immunogen.

**Specificity:** GPR62 antibody detects endogenous levels of total GPR62 protein.

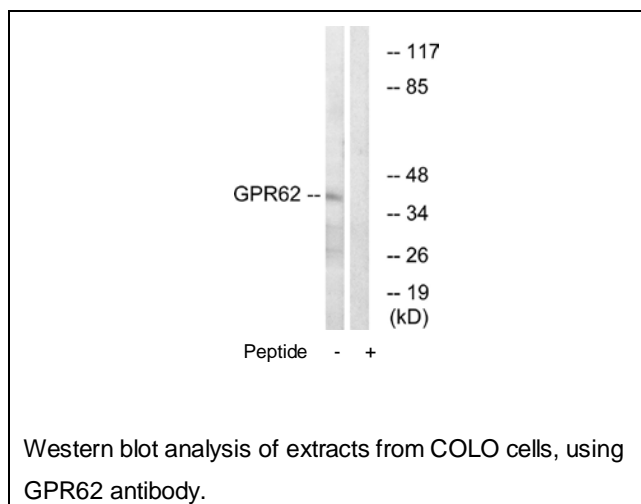
**Reactivity:** Human

**Applications:** WB: 1:500~1:1000 ELISA: 1:20000

**References:**

Lee D.K., Brain Res. Mol. Brain Res. 86:13-22(2001).

Takeda S., FEBS Lett. 520:97-101(2002).



**For Research Use Only**