



## LSHR Antibody

**E11-380G****Catalog Number:** E11-380G**Concentration:** 1mg/ml, 100ug/100uL**Swiss-Prot No.:** P22888**Other Names:** Lutropin-choriogonadotropic hormone receptor; LH/CG-R; LSH-R; Luteinizing hormone receptor; LHR; LHCGR; LCGR; LGR2; LHRHR**Storage/Stability:** Store at -20 °C/1 year**Form of Antibody:** Rabbit IgG in phosphate buffered saline (without  $Mg^{2+}$  and  $Ca^{2+}$ ), pH 7.4, 150mM NaCl, 0.02% sodium azide and 50% glycerol.**Immunogen:** The antiserum was produced against synthesized peptide derived from internal of human LSHR.**Purification:** The antibody was affinity-purified from

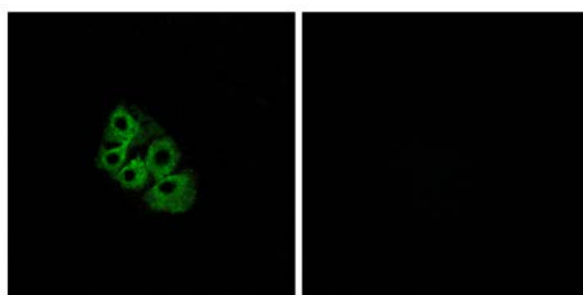
rabbit antiserum by affinity-chromatography using epitope-specific immunogen.

**Specificity:** LSHR antibody detects endogenous levels of total LSHR protein.**Reactivity:** Human (Identities = 100%, Positives = 100%);  
Mouse (Identities = 86%, Positives = 93%);  
Rat (Identities = 93%, Positives = 100%)**Applications:** IF: 1:100~1:500 ELISA: 1:10000**References:**

Minegish T., Biochem. Biophys. Res. Commun. 172:1049-1054(1990).

Jia X.-C., Mol. Endocrinol. 5:759-768(1991).

Frazier A.L., Mol. Endocrinol. 4:1264-1276(1990).



Peptide

-

+

Immunofluorescence analysis of A549 cells, using LSHR antibody.

**For Research Use Only**