



OR8B2/8B3 Antibody

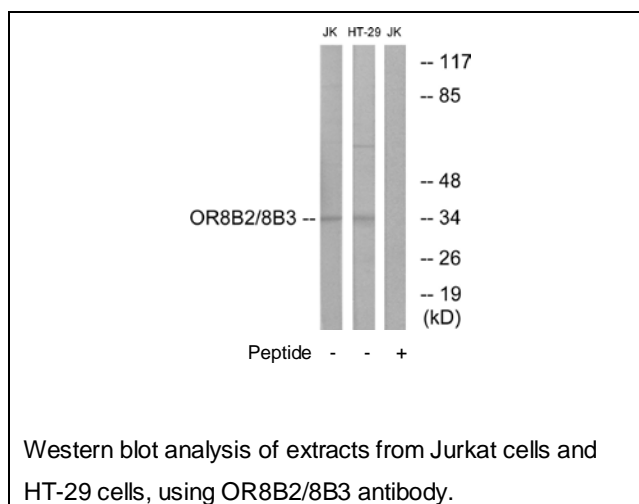
E11-682G**Catalog Number:** E11-682G**Concentration:** 1mg/ml, 100ug/100uL**Swiss-Prot No.:** Q96RD0**Other Names:** olfactory receptor 8B2; olfactory receptor, family 8, subfamily B, member 2; OR11-309; OR11-310**Storage/Stability:** Store at -20°C/1 year**Form of Antibody:** Rabbit IgG in phosphate buffered saline (without Mg^{2+} and Ca^{2+}), pH 7.4, 150mM NaCl, 0.02% sodium azide and 50% glycerol.**Immunogen:** The antiserum was produced against synthesized peptide derived from internal of human

OR8B2/8B3.

Purification: The antibody was affinity-purified from rabbit antiserum by affinity-chromatography using epitope-specific immunogen.**Specificity:** OR8B2/8B3 antibody detects endogenous levels of total OR8B2/8B3 protein.**Reactivity:** Human**Applications:** WB: 1:500~1:1000 ELISA: 1:10000**References:**

Fuchs T., Genomics 80:295-302(2002).

.

**For Research Use Only**